

RUBBER FLOORING COLLECTION

# VIBRATION IN GYMS

with everroll® and Regupol® 4080

Regupol®

Variofoam®



Regupol  
Australia

# Vibration in Gyms

with everroll® and Regupol® 4080

This system reflects a typical gym application to help alleviate vibration issues. For all other applications please contact Regupol's Technical Division. Please note that the drawings are not to scale and are for illustration purposes only.

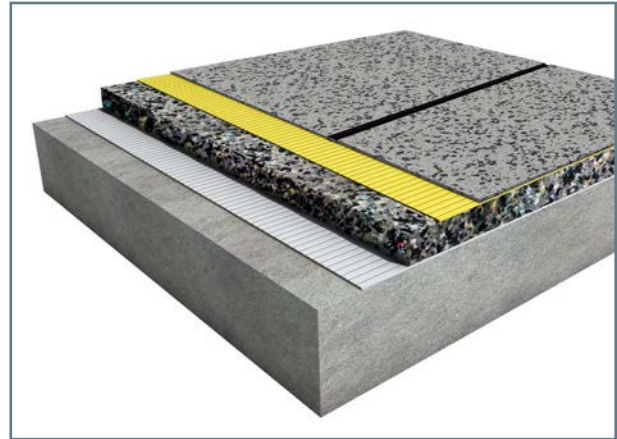
## Adhesive and Sealer Information



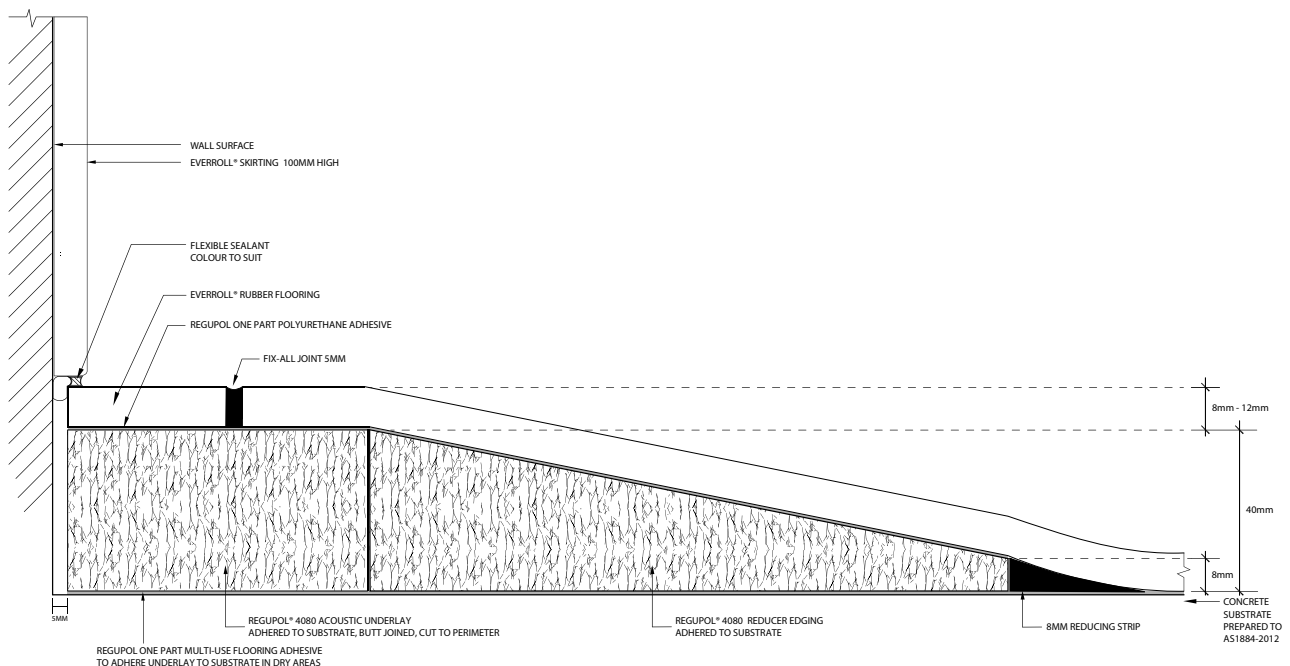
**Regupol One Part Polyurethane Adhesive** is an elastomeric moisture cured, solvent free polyurethane adhesive. The adhesive is suitable for internal and external wet and dry areas.



**Regupol One Part Multi-Use Flooring Adhesive** is a water based synthetic polymer, VOC compliant, multi-use flooring adhesive, with water resistant properties. This adhesive was specifically formulated to bond selected Regupol® products to most common interior sub-floors. The product is suitable for dry area installations only.



- 1 FIX-ALL Joint Sealer (5mm)
- 2 Selected everroll® Rubber Flooring (8mm to 12mm thick)
- 3 Regupol One Part Polyurethane Adhesive
- 4 Regupol® 4080 Acoustic Underlay
- 5 Regupol One Part Multi-Use Flooring Adhesive
- 6 Concrete Substrate Prepared to AS1884-2012 with Regupol Primer 444



**DISCLAIMER:** The above information is given in good faith as a suggested guide in specifying everroll® 4080 system, no guarantee or warranty is expressed or implied. Any circumstances not covered by this guide should be referred to Regupol (Australia) Pty Limited or its Distributors for any particular attention required. There are, however, many factors that may affect the outcome of projects using our products that are beyond our control. Regupol (Australia) Pty Limited cannot be responsible for poor climate conditions, inadequate surface preparation, poor application techniques, not observing curing times, improper thinning of adhesives or any variable beyond our control. No liability is accepted by Regupol (Australia) Pty Limited, our employees, distributors, representatives or agents, for any loss or damage, direct or indirect, that may result from using the information and/or suggestions as actual conditions for use that are beyond our control. All materials should be checked/tested for their suitability to the prevailing site conditions.

