



CATALOGUE

ANTFLOR-SPC FLOORING



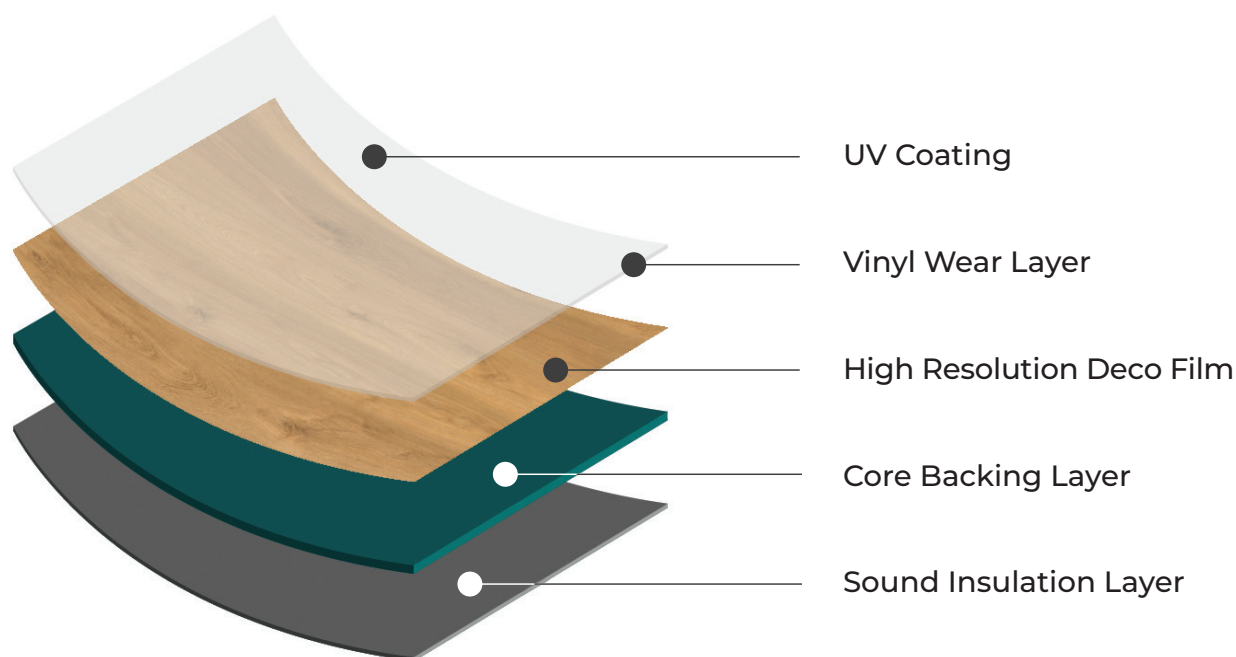
ANTFLOR-SPC FLOORING

SPC / Stone Polymer (Plastic) Composite is the product that enhances vinyl flooring's durability and dimensional stability. The SPC flooring with brand **"ANTFLOR"** offers designs of the current trend of natural patterns with an eye-catching looking; variety in size and thickness; waterproofing property; and sound reduction with an attached underlayment. Moreover, with the added reasonable price and suitable for many applications with the living space close to nature but no less luxurious and modern. We believe that the **ANTFLOR-SPC** flooring will be a familiar brand of flooring solution for our customers.



ANTFLOR - SPC


SIZE	: 305x610mm; 150x936mm ^(*)
CLICK TYPE	: 2G/5G-i
THICKNESS	: 5.0 mm
WEAR LAYER	: 0.5mm
COLORS	: 18 colors or custom ^(*)
INSTALLATION	: Click System
WARRANTY	: 15 years for commercial



ANTFLOR-SPC FLOORING STRUCTURE

^(*) Custom color/ size available, MOQ is required.

^(**) Stock available, please contact us for more information.

A modern office hallway with white marble walls and a light-colored tiled floor. The hallway is flanked by marble columns and has recessed ceiling lights. In the center of the hallway, there is a small potted plant. On the left and right sides, there are larger potted plants. The text "ANTRADE" is displayed in the center of the hallway.

ANTRADE

#Partnersyoucantrust

#Since2006

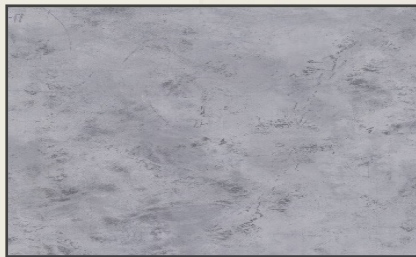
SPC CEMENT & STONE TEXTURE | 305 x 610 mm/ plank | Wear layer: 0.5mm



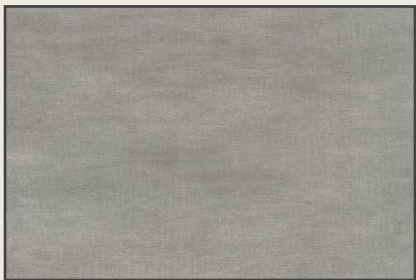
HLZ400549-6 (**)



HLZ400548-7



HLZ400543-3



HL400043-3



HLZ400548-2



HL400044-1 (**)



HL300010-1



SPC WOOD TEXTURE

| 150 x 936 mm/ plank

| Wear layer: 0.5mm



HL400042-6



HL400038-1



HL600003-1 ^(**)



HLZ400537-5



HLZ400537-3



HLZ400537-4 ^(**)



HL400008-2



HL400038-12 ^(**)



HLW-2017-07



HLW-2017-03



HL400038-2 ^(**)

^(*) Custom color/ size available, MOQ is required.

^(**) Stock available, please contact us for more information.

MAINTAINANCE & INSTALLATION GUIDELINE

1. TOOLS NEEDED: Spacers, a hand block, an installation support wedge, a hand saw or an el. jig-saw, a pencil, a measuring tape, a drill, a chisel + hammer.

Later, after 3 rows, you can easily position the flooring against the front wall with predicted spacers.

2. SUBFLOOR REPARATION: The subfloor must be dry, flat, firm and clean, free from all debris & residues. The absorbency must be checked and subfloor should not be exposed to humidity. The preparation/ dryness of the subfloor and installation procedures should all be as per the current relevant Standard within the country of use.

3. INSTALLATION:

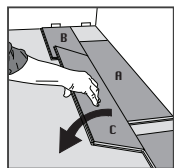


Fig 1 | First row.

Place a panel (A) as support for long side alignment of panel (B) and (C) while you install panel (B) and panel (C). After that the complete first row is installed, remove panel (A).

Later, after 3 rows, you can easily position the flooring against the front wall with predicted spacers.

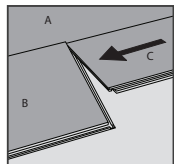


Fig 2 | Second plank, first row.

Place this plank (C) gently close to the short end of the first one (B).

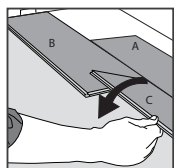


Fig 3

Fold it down with a single action movement. During the fold down, make sure the panels are close to each other.

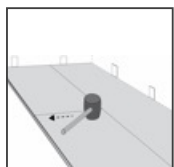


Fig 4

Afterwards press slightly or use a rubber hammer along the short end just installed.

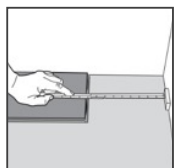


Fig 5

At the end of the first row, put a spacer to the wall and measure the length of the last plank to fit.

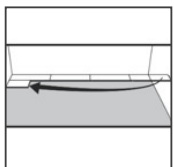


Fig 6 | Second row.

First plank min length 500 mm. Put a spacer against the left wall.

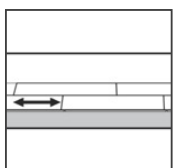


Fig 7

Staggered joint distance i.e. minimum distance between short ends of planks in parallel rows shall not be less than the given length (400mm or two times of the plank width).

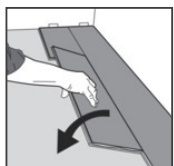


Fig 8 | Second plank second row.

Place the panel gently and close to the short end of the previous panel and fold it down in a single action movement.

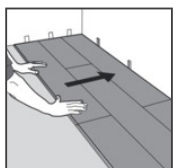


Fig 9 | After 2-3 rows.

Adjust the distance to the front wall by placing spacers.

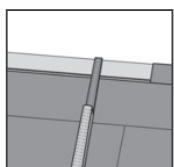


Fig 10 | Last row (and perhaps also first row).

Minimum width 50 mm. Place a spacer to the wall before measuring. Cut the panels lengthwise.

HORIZONTAL INSTALLATION:

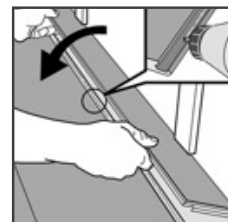
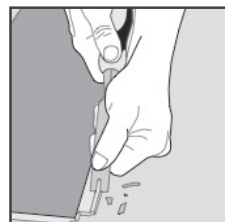


Fig 14 & Fig 15

Cut off the vertical locking part of the strip with a chisel, put applicable glue on the strip and push the planks horizontally together. If necessary place some spacers between last board and the wall during the hardening.

RADIATOR PIPES:

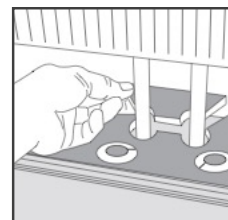


Fig 16 & Fig 17

Installation at radiators. Drill the holes 2 x spacer thickness larger than the diameter of the pipes.

4. CLEANING AND MAINTENANCE:

The floor should be cleaned regularly by using a vacuum-cleaner (attachment for wood floors) or brushed. If required, wipe with a damp-dry (well squeezed) cloth using a neutral cleaning solution. Any water spilt accidentally must be wiped off immediately.

Note:

If any doubts or clarifications should be needed, please contact Antrade for further information.



ANH NGOC THANH TRADING COMPANY LIMITED
(ANTRADE CO., LTD.)

HCMC OFFICE:
Room 5.03, 5th Fl., Phuong Tower,
31C Ly Tu Trong Str., Dist. 1, HCMC, Vietnam.
Tel: (+84 28) 3825 7622 / +84 933 662 138

HANOI BRANCH:
Room 701, 7th Fl., 131 Bui Thi Xuan Str.,
Hai Ba Trung Dist., Ha Noi, Vietnam.
Tel: (+84 24) 6328 9487

Email: sales@antrade.vn
Website: www.antrade.vn