

Net Effect™ Collection



Interface®

Net Effect™ Collection

First photographed from space in 1968, that image of Earth, the little blue planet, reframed our relationship to our world and to one another forever. Suddenly it was clear that the oceans we all share make us unique in the universe.

Discarded fishing nets have been part of the mix of our 100% recycled content type 6 nylon since 2011 when our partner, Aquafil, began incorporating them into the yarn they sell us. Last year, we saw an opportunity to expand the positive impacts of this design solution. Designed as a tribute, Net Effect honors the ocean not only in its aesthetic references but also in a unique and tangible way through a project called Net-Works.

Net-Works provides a source of income for small fishing villages in the Philippines, while cleaning up their beaches and waters of discarded fishing nets that threaten their livelihood and the very precious double barrier reef off their shore. The collected nets are sold to Aquafil, who, in turn, converts them into yarn for Interface carpet tile – a very bright (blue) idea for a greener future.

Net Effect One is a grouping of three textures in 50 cm squares that, when placed side by side, describes the precise moment when the sea foams into the shore creating organic imagery. Each pattern also has a life of its own as it floods the floor with movement and color. B601™ has a more pronounced texture with shimmering lighter ends on top of deeper tones. B603™ takes a deep dive into a more dense construction and B602™ is the transition between the two.

Net Effect Two includes three products in our new 25 cm x 1 m skinny plank format that captures the fluidity of water even in linear patterns with expanding and contracting rhythms. Discover the nuance of transitions when the three different textures – B701™, B702™ and B703™ – are set side by side in the same color. Or reimagine the complexity of light moving through water by mingling several of the eight colors into one composition. The shared palette was drawn from the deepest parts of the ocean to the sun and salt bleached wood and stones of the shore.

An elegant design solution for the floor and a socially responsible design solution for a fragile economy – that's a very positive Net Effect.



PRODUCT B601 COLOUR PACIFIC PRODUCT B603 COLOUR PACIFIC INSTALLED NON DIRECTIONAL
PRODUCT B602 COLOUR PACIFIC INSTALLED PATTERN BY TILE

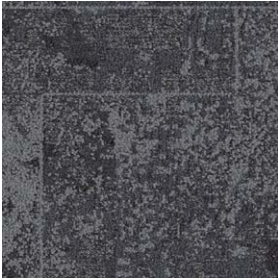




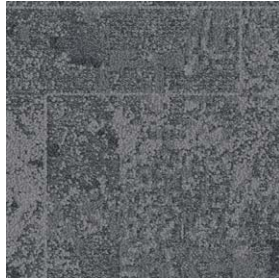
PRODUCT B701 COLOUR CASPIAN INSTALLED ASHLAR
PRODUCT B702 COLOUR CASPIAN PRODUCT B703 COLOUR CASPIAN INSTALLED PATTERN BY TILE



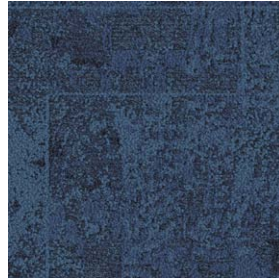
B601™ Colourline



7414-001-000 Black Sea



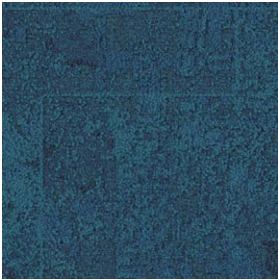
7414-002-000 North Sea



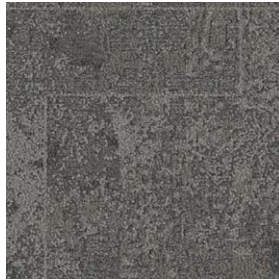
7414-003-000 Pacific



7414-004-000 Arctic



7414-005-000 Atlantic



7414-006-000 Caspian



7414-007-000 Sand



7414-008-000 Driftwood



PRODUCT B601 COLOURS BLACK SEA, NORTH SEA, ARCTIC
PRODUCT B602 COLOURS BLACK SEA, NORTH SEA, ARCTIC
PRODUCT B603 COLOURS BLACK SEA, NORTH SEA, ARCTIC
INSTALLED PATTERN BY TILE

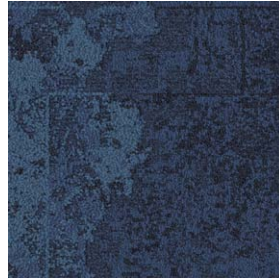
B602™ Colourline



7416-001-000 Black Sea



7416-002-000 North Sea



7416-003-000 Pacific



7416-004-000 Arctic



7416-005-000 Atlantic



7416-006-000 Caspian



7416-007-000 Sand



7416-008-000 Driftwood



B603™ Colourline



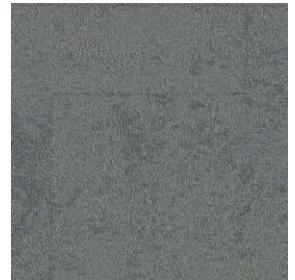
7418-001-000 Black Sea



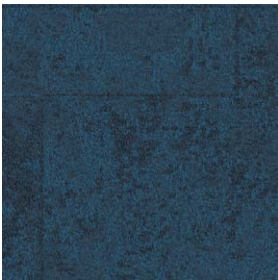
7418-002-000 North Sea



7418-003-000 Pacific



7418-004-000 Arctic



7418-005-000 Atlantic



7418-006-000 Caspian



7418-007-000 Sand



7418-008-000 Driftwood





PRODUCT B601 COLOURS PACIFIC, ATLANTIC PRODUCT B602 COLOURS PACIFIC, ATLANTIC
PRODUCT B603 COLOURS PACIFIC, ATLANTIC PRODUCT B701 COLOURS PACIFIC, ATLANTIC
PRODUCT B702 COLOURS PACIFIC, ATLANTIC PRODUCT B703 COLOURS PACIFIC, ATLANTIC
INSTALLED PATTERN BY TILE



B701™ Colourline



7431-001-000 Black Sea



7431-002-000 North Sea



7431-003-000 Pacific



7431-004-000 Arctic



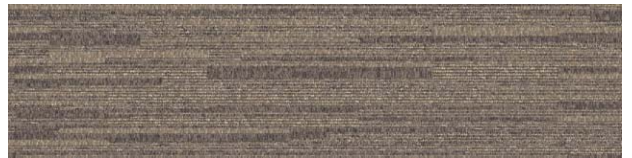
7431-005-000 Atlantic



7431-006-000 Caspian



7431-007-000 Sand



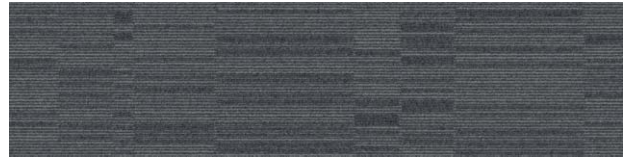
7431-008-000 Driftwood



B702™ Colourline



7432-001-000 Black Sea



7432-002-000 North Sea



7432-003-000 Pacific



7432-004-000 Arctic



7432-005-000 Atlantic



7432-006-000 Caspian



7432-007-000 Sand



7432-008-000 Driftwood



B703™ Colourline



7434-001-000 Black Sea



7434-002-000 North Sea



7434-003-000 Pacific



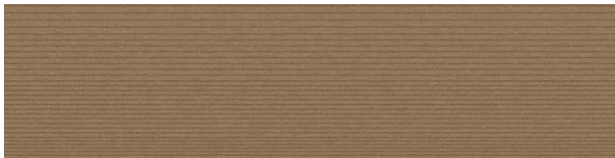
7434-004-000 Arctic



7434-005-000 Atlantic



7434-006-000 Caspian



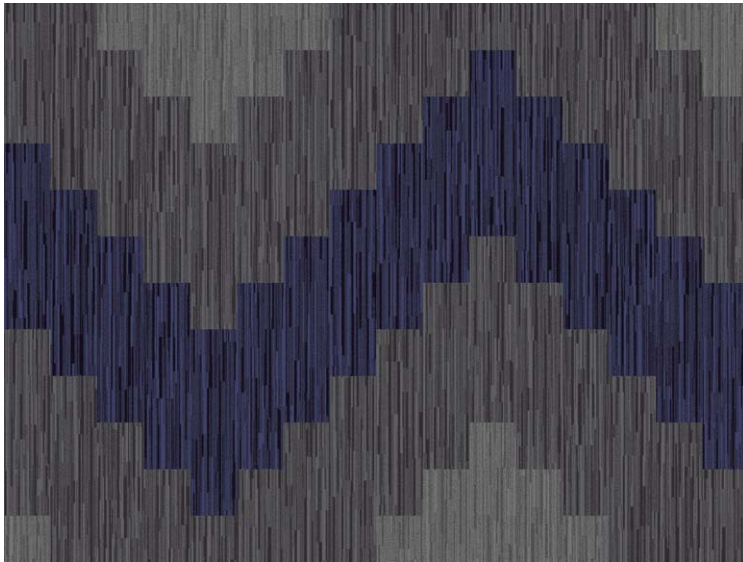
7434-007-000 Sand



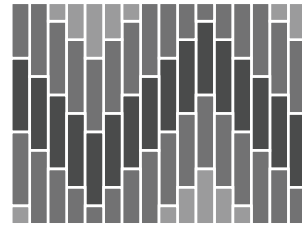
7434-008-000 Driftwood

Design Ideas

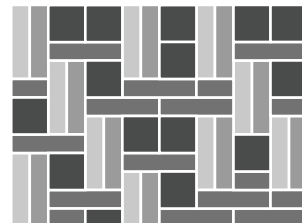
Use the pattern by tile layout suggestions below to create your own unique floor designs.



- **PRODUCT B701 COLOUR NORTH SEA**
- **PRODUCT B701 COLOUR PACIFIC**
- **PRODUCT B701 COLOUR ARCTIC**

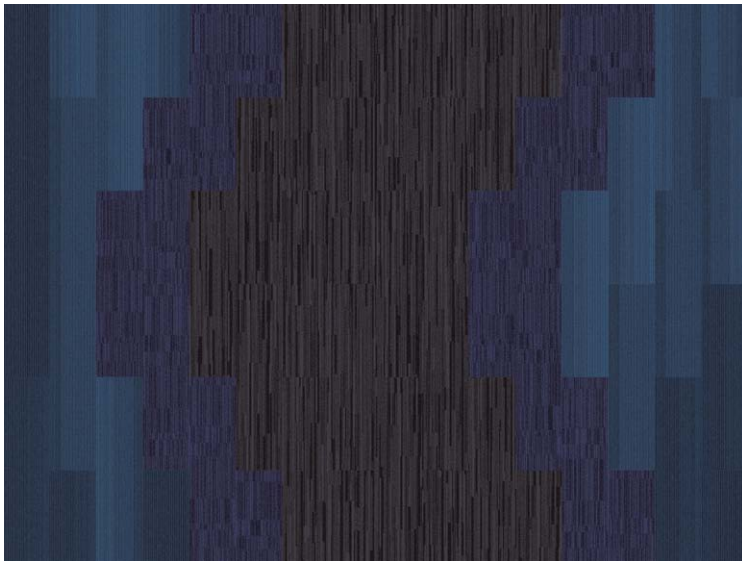
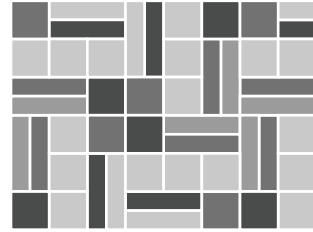


- **PRODUCT B603 COLOUR PACIFIC**
- **PRODUCT B701 COLOUR BLACK SEA**
- **PRODUCT B702 COLOUR BLACK SEA**
- **PRODUCT B703 COLOUR BLACK SEA**

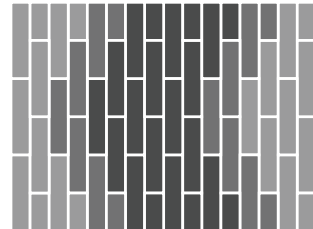




- **PRODUCT B601 COLOUR ATLANTIC**
- **PRODUCT B601 COLOUR DRIFTWOOD**
- **PRODUCT B603 COLOUR PACIFIC**
- **PRODUCT B702 COLOUR NORTH SEA**
- **PRODUCT B703 COLOUR PACIFIC**
- **PRODUCT B703 COLOUR ATLANTIC**
- **PRODUCT B703 COLOUR DRIFTWOOD**



- **PRODUCT B701 COLOUR BLACK SEA**
- **PRODUCT B702 COLOUR PACIFIC**
- **PRODUCT B703 COLOUR ATLANTIC**



Specifications

B601™

Style Code	7414 Pattern 000
Product Definition	Tufted Textured Loop
Yarn/Fibre	100% Non-virgin Type 6 Nylon
Colour System	100% Solution Dyed
Machine Gauge	1/10
Pile Thickness	5.0mm +/- 0.5mm
Total Thickness	9.0mm +/- 0.5mm
Tile Size	50cm x 50cm
Area of Use	Commercial – General Duty
Lifetime Antimicrobial	Intersept®
Soil/Stain Protection	Protekt ² ®
Total Recycled Content	GlasBac® 65% to 70% recycled content GlasBac®RE 80% to 85% recycled content
Installation Methods	Non-directional



B602™

Style Code	7416 Pattern 000
Product Definition	Tufted Textured Loop
Yarn/Fibre	100% Non-virgin Type 6 Nylon
Colour System	100% Solution Dyed
Machine Gauge	1/10
Pile Thickness	4.0mm +/- 0.5mm
Total Thickness	8.5mm +/- 0.5mm
Tile Size	50cm x 50cm
Area of Use	Commercial – General Duty
Lifetime Antimicrobial	Intersept®
Soil/Stain Protection	Protekt ² ®
Total Recycled Content	GlasBac® 65% to 70% recycled content GlasBac®RE 80% to 85% recycled content
Installation Methods	Non-directional



B603™

Style Code	7418 Pattern 000
Product Definition	Tufted Textured Loop
Yarn/Fibre	100% Non-virgin Type 6 Nylon
Colour System	100% Solution Dyed
Machine Gauge	1/10
Pile Thickness	3.0mm +/- 0.5mm
Total Thickness	7.0mm +/- 0.5mm
Tile Size	50cm x 50cm
Area of Use	Commercial – Heavy Duty
Lifetime Antimicrobial	Intersept®
Soil/Stain Protection	Protekt ² ®
Total Recycled Content	GlasBac® 65% to 70% recycled content GlasBac®RE 80% to 85% recycled content
Installation Methods	Non-directional



Specifications

B701™

Style Code	7431 Pattern 000
Product Definition	Tufted Textured Tip Sheared Loop
Yarn/Fibre	100% Non-virgin Type 6 Nylon
Colour System	100% Solution Dyed
Machine Gauge	1/10
Pile Thickness	3.5mm +/- 0.5mm
Total Thickness	6.5mm +/- 0.5mm
Tile Size	25cm x 100cm
Area of Use	Commercial – Heavy Duty
Lifetime Antimicrobial	Intersept®
Soil/Stain Protection	Protekt ² ®
Total Recycled Content	GlasBac® 65% to 70% recycled content GlasBac®RE 80% to 85% recycled content

Installation Methods



Ashlar



Herringbone

B702™

Style Code	7432 Pattern 000
Product Definition	Tufted Textured Loop
Yarn/Fibre	100% Non-virgin Type 6 Nylon
Colour System	100% Solution Dyed
Machine Gauge	1/10
Pile Thickness	3.0mm +/- 0.5mm
Total Thickness	6.0mm +/- 0.5mm
Tile Size	25cm x 100cm
Area of Use	Commercial – Heavy Duty
Lifetime Antimicrobial	Intersept®
Soil/Stain Protection	Protekt ² ®
Total Recycled Content	GlasBac® 65% to 70% recycled content GlasBac®RE 80% to 85% recycled content

Installation Methods



Ashlar



Herringbone

B703™

Style Code	7434 Pattern 000
Product Definition	Tufted Cut Pile
Yarn/Fibre	100% Non-virgin Type 6 Nylon
Colour System	100% Solution Dyed
Machine Gauge	5/64
Pile Thickness	1.5mm +/- 0.5mm
Total Thickness	4.5mm +/- 0.5mm
Tile Size	25cm x 100cm
Area of Use	Commercial – Heavy Duty
Lifetime Antimicrobial	Intersept®
Soil/Stain Protection	Protekt ² ®
Total Recycled Content	GlasBac® 65% to 70% recycled content GlasBac®RE 80% to 85% recycled content

Installation Methods



Ashlar



Herringbone



CERTIFICATION NUMBER
038-002
**Environmentally
Friendly Carpet**



Gold Certified
038-002
Sustainable Carpet

GREEN TAG
CERTIFIED



green building council australia
MEMBER



FM 40957



EMS 60261

CoolCarpet™

Intersept®

Production specifications are subject to normal manufacturing tolerances and may be changed without notice. Slight variation in colour among different production lots are normal and should be considered in the overall installation plan. Products covered by manufacturer's written warranty only. All other warranties, including without limitation any implied warranties of merchantability or fitness for particular purpose, are hereby disclaimed. Contact your representative for written warranty information. Recycled content calculations are based on historical averages by total weight of the product for backings. Yarn/Fibre recycled content calculation excludes backing. We update our recycled content information and other environmental data regularly to reflect changes and advancements in our technology.

*Cool Carpet is not a standard option in Australia and New Zealand.

www.interface.com

South East Asia

Interface Asia
tel: 65-6478 1510
seaweb@interface.com

Japan

Interface Japan
tel: 81-3-5733 5211
jpnweb@interface.com

South Korea

Interface Korea
tel: 82-2-555 1734
seaweb@interface.com

Beijing Studio

Interface China
tel: 86-10-6590 7810
cnweb@interface.com

Hongkong Studio

Interface China
tel: 852-2802 0838
hkgweb@interface.com

Shanghai Studio

Interface China
tel: 86-21-6340 3868
cnweb@interface.com

Australia

Interface Australia
tel: local toll free 1800 008101
www.interface.com.au



ANH NGOC THANH TRADING COMPANY LIMITED (ANTRADE CO., LTD.)

HCM office: R. 5.03, 5th Fl., Phuong Tower, 31C Ly Tu Trong Str., Ben Nghe W., Dist.1, HCMC. Hai Ba Trung District, Ha Noi City, Vietnam.
Tel: (+84) 28 38257622 / 28 38257623

HN office: R.701, 7th Fl., 131 Bui Thi Xuan Str.,

Tel: (+84) 24 63289487 / 24 39749263

Website: www.antrade.vn

Hotline: +84 933 662138

Email: sales@antrade.vn



Mission Zero:

our promise to eliminate any negative impact our company may have on the environment by the year 2020.