

SOUNDPROOFING TIMBER FLOORS

REGUPOL SONUS CORE 10-S

REGUPOL sonus core 10-S is a high performance acoustic underlay, designed to reduce the transmission of impact sound generated by footfall noise.

Suitable for green buildings, the **REGUPOL sonus core 10-S** is a sustainable product made from post-consumer end of life tyre bound with polyurethane.

This environmentally preferable product has been independently certified as meeting the requirements of Good Environmental Choice Australia GECA 25-2011 v2.0i - Floor Coverings Standard. See www.geca.eco

REGUPOL sonus core 10-S can be installed under bonded and unbonded screed beds, laminate and engineered timber floors. All applications should be checked for suitability with the selected floor finish, waterproof membranes, **REGUPOL** adhesives, tile adhesives, grouts etc.



Available in:

Rolls 1.25m x 10lm, 20lm
Thickness 10mm



ACOUSTICAL PERFORMANCE

ENGINEERED TIMBER Normalized Impact Sound Pressure Levels

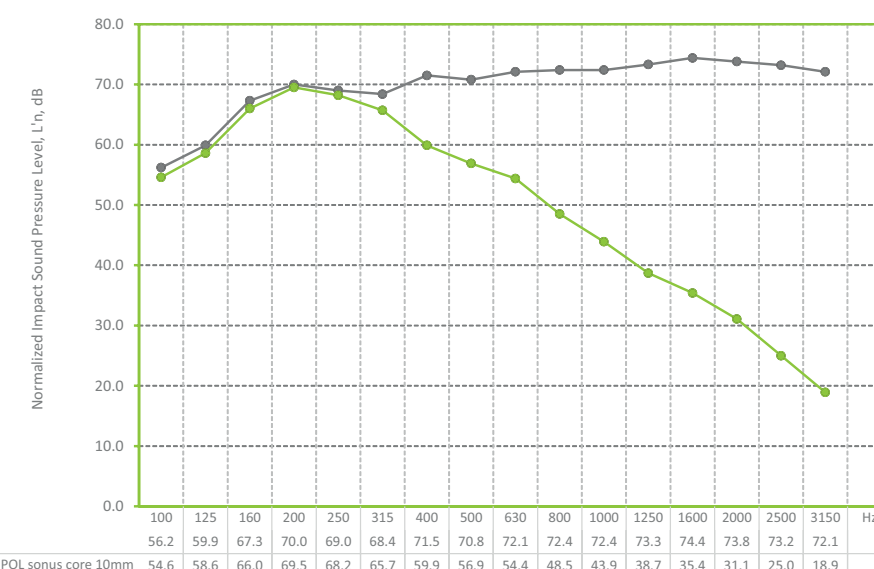
Tested at CSIRO, in accordance with ISO 140-8: 2006 (E), ISO 140-6-2006, AS ISO 717.2-2004, ASTM E989-89.

Test area 10.8m². Results can vary when different floors are installed and/or if bonded.

REPORT RG087

Layer of 14mm engineered timber (floating), to **REGUPOL sonus core 10mm**, to 150mm concrete slab (no ceiling).

$L_{n,w}$ 58dB
 ΔL_w 18dB
50 IIC



ANH NGOC THANH TRADING COMPANY LIMITED (ANTRADE CO., LTD.)

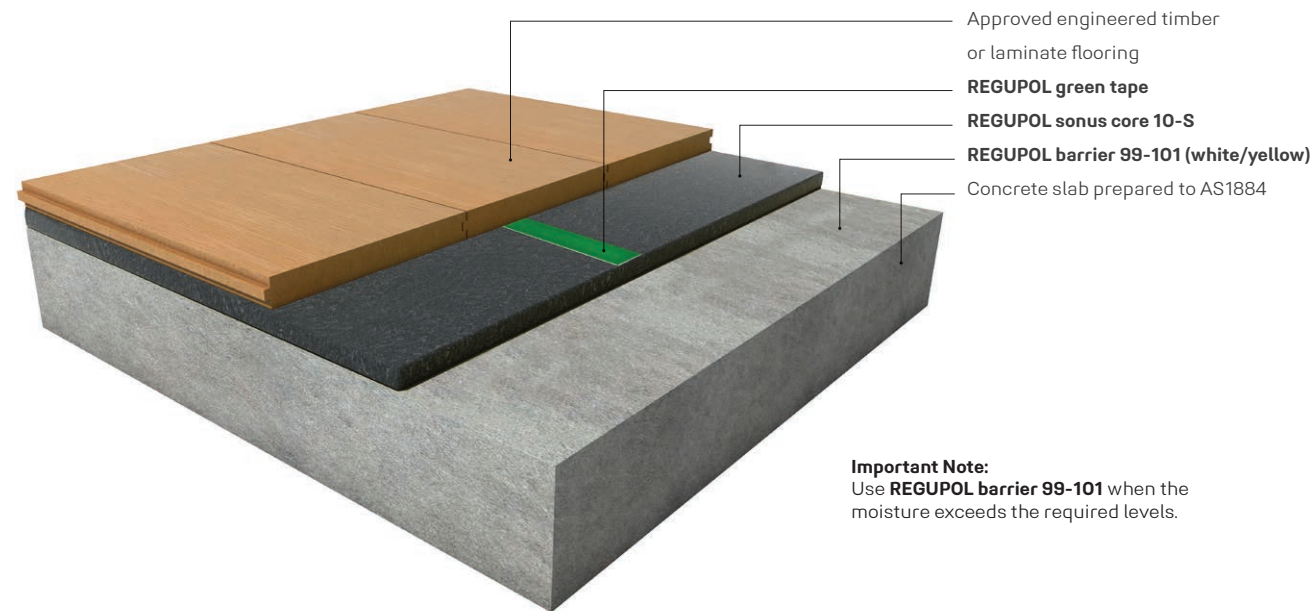
HCM office: R. 5.03, 5th Fl., Phuong Tower,
31C Ly Tu Trong Str., Ben Nghe W., Dist.1, HCMC.
Tel: (+84) 28 38257622 / 28 38257623

HN office: R. 701, 7th Fl., 131 Bui Thi Xuan Str.,
Hai Ba Trung District, Ha Noi City, Vietnam.
Tel: (+84) 24 63289487 / 24 39749263

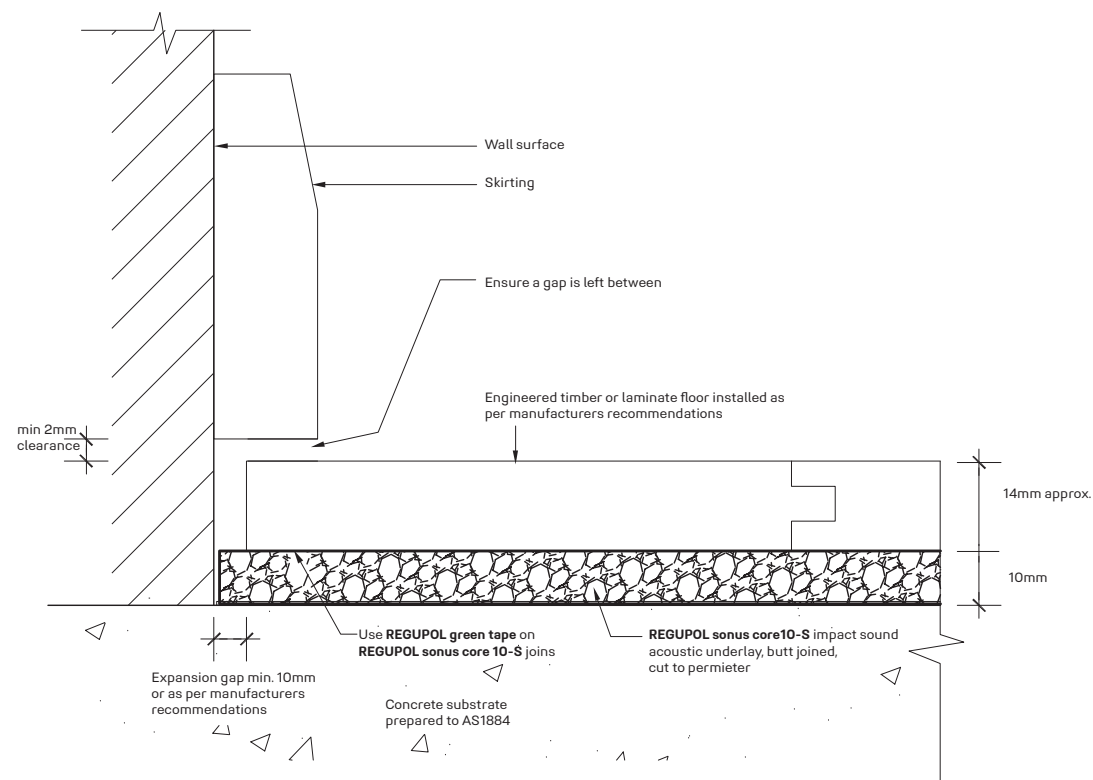
Website: www.antrade.vn || Hotline: +84 93 366 2138 || Email: sales@antrade.vn

NON-BONDED ENGINEERED TIMBER OR LAMINATE

This **REGUPOL sonus core 10-S** system reflects a typical residential application with approved engineered timber or laminate floor coverings. For all other applications please contact **REGUPOL** acoustic division. Please note that drawings are not to scale and are for illustration purposes only.

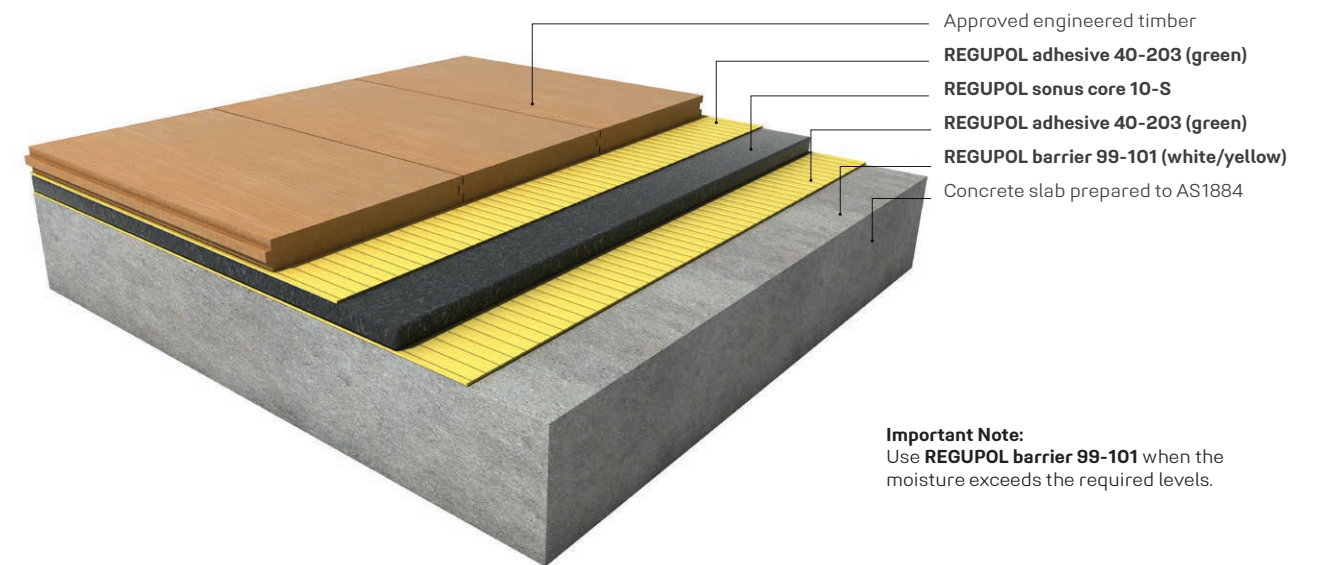


Important Note:
Use **REGUPOL barrier 99-101** when the moisture exceeds the required levels.



DUAL BOND ENGINEERED TIMBER

This **REGUPOL sonus core 10-S** system reflects a typical residential application with approved engineered timber floor coverings. For all other applications please contact **REGUPOL** acoustic division. Please note that drawings are not to scale and are for illustration purposes only.



Important Note:
Use **REGUPOL barrier 99-101** when the moisture exceeds the required levels.

