



REGUPOL SONUS CORE 10-S

REGUPOL sonus core 10-S is a high performance acoustic underlay, designed to reduce the transmission of impact sound generated by footfall noise.

Suitable for green buildings, the **REGUPOL sonus core 10-S** is a sustainable product made from post-consumer end of life tyre bound with polyurethane.

This environmentally preferable product has been independently certified as meeting the requirements of Good Environmental Choice Australia GECA 25-2011 v2.0i - Floor Coverings Standard. See www.geca.eco

REGUPOL sonus core 10-S can be installed under bonded and unbonded screed beds, laminate and engineered timber floors. All applications should be checked for suitability with the selected floor finish, waterproof membranes, **REGUPOL** adhesives, tile adhesives, grouts etc.



Available in:

Rolls 1.25m x 10lm, 20lm
Thickness 10mm



ACOUSTICAL PERFORMANCE

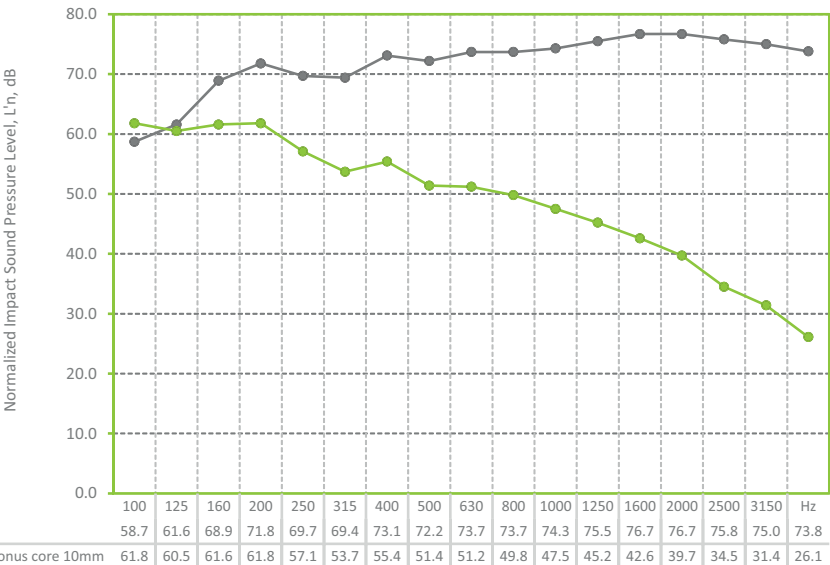
TILE WITH SCREED Normalized Impact Sound Pressure Levels

Tested at CSIRO Clayton, in accordance with ISO 140-8: 2006 (E), ISO 140-6-2006, AS ISO 717.2-2004, ASTM E989-89. Test area 10.8m². Results can vary when different floors are installed and/or if bonded.

REPORT RG097

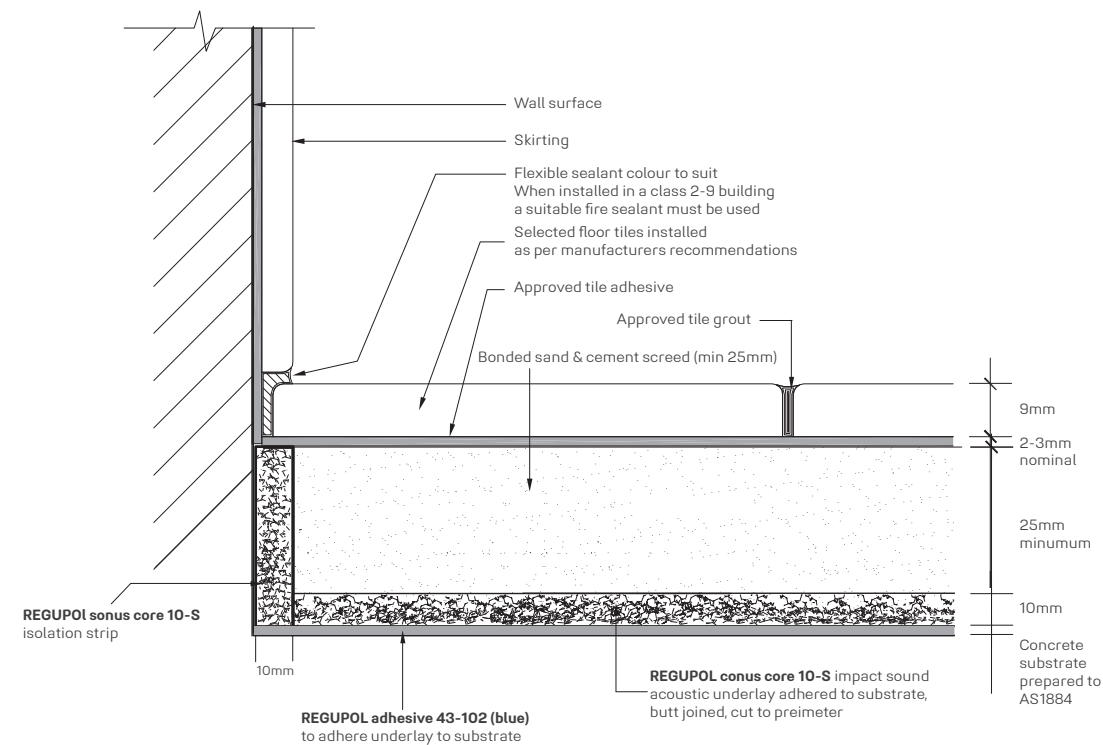
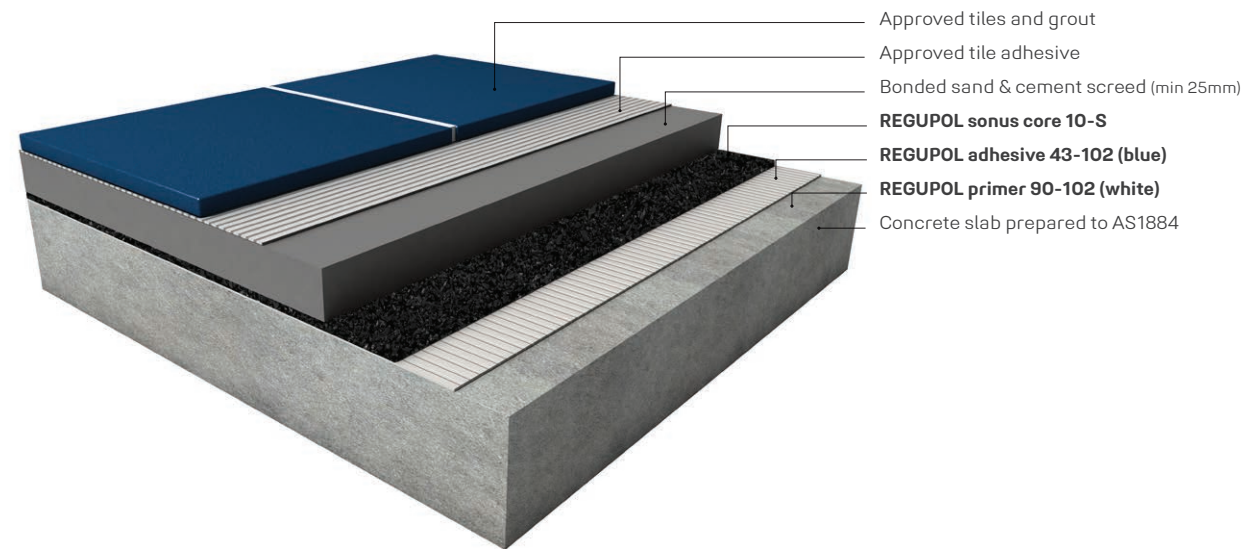
Layer of 8mm Ceramic Tile bonded to 30mm Screed Bed, to **REGUPOL sonus core 10mm**, to 150mm Concrete Slab (no ceiling).

$L_{n,w}$ 53dB
 ΔL_w 23dB
57 IIC



DRY AREA BONDED SCREED & TILE

This **REGUPOL sonus core 10-S** system reflects a typical residential application with approved screed beds.
For all other applications please contact **REGUPOL** acoustic division. Please note that drawings are not to scale and are for illustration purposes only.



WET AREA BONDED SCREED & TILE

This **REGUPOL sonus core 10-S** system reflects a typical residential application with approved screed beds.
For all other applications please contact **REGUPOL** acoustic division. Please note that drawings are not to scale and are for illustration purposes only.

