

PRODUCT INFORMATION

REGUPOL EVERROLL ULTIMATE



Product:

resilient floor covering made of PUR-bonded EPDM-granulates, with 100 % EPDM colour content

Areas of Application:

Fitness Sports & Leisure, Commercial, Retail and Education flooring

Features:

comfortable, robust, durable, sustainable, slip resistant

Standard Roll Dimensions:

Width: 1,250 mm

Standard: 4 mm (40lm), 8 mm (25lm)

Presealed: 4 mm (20lm), 8 mm (25lm)

Standard Dimensions Modular Tiles:

Tile: 600 x 600mm

Plank: 1200 x 300mm

Hexagon: 600 x 520mm

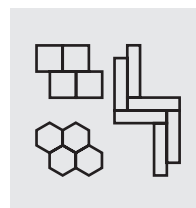
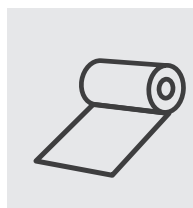
Thicknesses: 4mm and 8mm

Weight:

approx. 1.38 kg/m²/mm

Impact Resistance:

> 21 Nm based on EN 14904 / EN 1517



Force Reduction:

up to 14 % based on EN 14904 / EN 14808

Slip resistance:

AS 4586:2013 Slip resistance classification of new pedestrian surface materials, Appendix A – Wet Pendulum Test. Slip Certificate available on request.

Standard: P3, Sealed: P2, Slip Resistant Sealed: P5

Colours:

22 standard colours

Further technical data is available on request.



PRODUCT INFORMATION

REGUPOL EVERROLL ULTIMATE



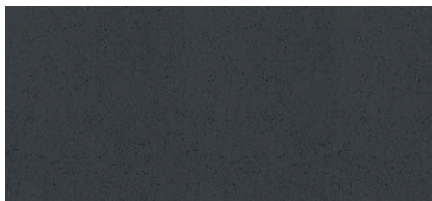
REGUPOL everroll ultimate Available standard or pre-sealed



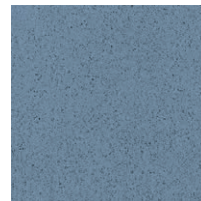
Manila [1105]
4 | 8mm (shape berlin)



Osaka [1187]
4mm (shape oslo)



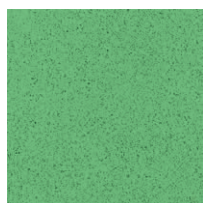
Lima [1113]
4mm (shape mons)



Boston [1112]
4mm (shape nome)



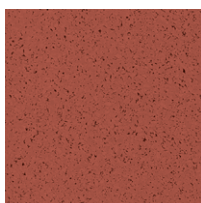
Seattle [1010]
4mm (shape palau)



Galway [1009]
4mm (shape manaus)



Yuma [1030]
4mm (shape kush)



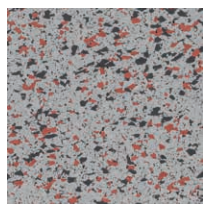
Lagos [1008]
4mm (shape goa)



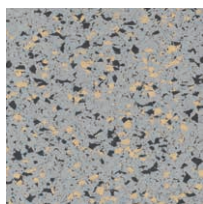
Melbourne [1074]
4mm (shape melbourne)



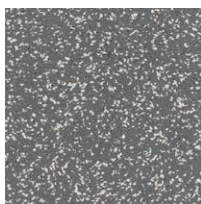
Amsterdam [1036]
4mm (shape amsterdam)



Jakarta [3003]
4mm (intensity jakarta)



Kýpros [3002]
4mm (intensity kypros)



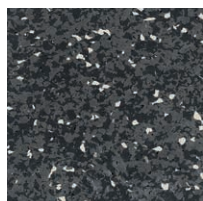
Oslo [1208]
4mm (active oslo)



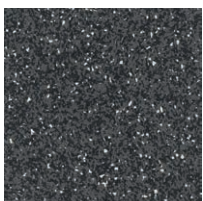
Paris [1085]
4 | 8mm (intensity berlin)



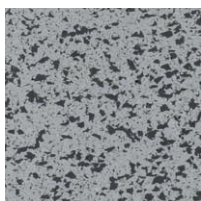
Berlin [2005]
4mm (active berlin)



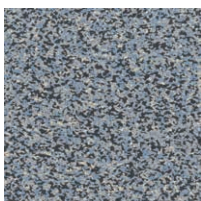
Mons [3138]
4 | 8mm (intensity mons)



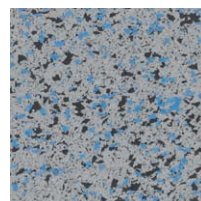
Pompeji [1194]
4mm (active mons)



Island [3000]
4 | 8mm (intensity island)



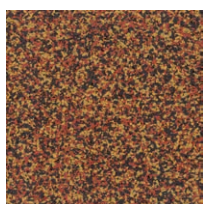
Nome [2004]
4mm (active nome)



Helsinki [3001]
4mm (intensity nome)



Kush [2001]
4mm (active kush)



Goa [2000]
4mm (active goa)

(brackets show superceeded product name)

Deviations from the colours shown are possible due to production batches and brochure print.



ANH NGOC THANH TRADING COMPANY LIMITED (ANTRADE CO., LTD.)

HCM office: R. 5.03, 5th Fl., Phuong Tower,
31C Ly Tu Trong Str., Ben Nghe W., Dist. 1, HCMC.
Tel: (+84) 28 38257622 / 28 38257623

Website: www.antrade.vn

HN office: R. 701, 7th Fl., 131 Bui Thi Xuan Str.,
Hai Ba Trung District, Ha Noi City, Vietnam.
Tel: (+84) 24 63289487 / 24 39749263

Email: sales@antrade.vn

the up-to-