

# Aerial Flying Colours



**Interface®**



POW! The Aerial™ Collection just got a boost of colour. Pure colour tiles connect to "colour-full" tiles; colourful tiles connect to transition tiles; and transition tiles connect to the strong, neutral foundation that skyrocketed Aerial from the start.

Aerial Planks and Aerial Squares are now joined by Aerial Flying Colours, creating a library in a full range of vibrant and neutral colours in squares and Skinny Planks™

Aerial Flying Colours introduces two more styles to the Aerial Planks offering—AE315 and AE317, along with more colourways for both AE311 and On Line.™ Use AE315 to blend a spray of colour to a neutral ground, creating that signature Interface transition tile, or cast a soft hue across the entire floor. Use AE317 to make a bold leap with a vibrant, mixed-hue approach to each colourway.

There are thirteen colour sequences presented with an On Line bright at the top and a neutral at the bottom to accent, define and set colour direction. But don't just look up and down—look left and right across the full array to find your own unique combination.

The entire Aerial Collection is made with 100% recycled content nylon and is part of our i2® product family with benefits like mergeable dye lots that enhance selective replacement. These are just a couple of steps we take toward creating a climate fit for life. Join the **#ClimateTakeBack** movement.



**ANTRADE CO.,LTD**

Room 5.03, 5th Fl., Phuong Tower, 31C Ly Tu Trong Street, Ben Nghe Ward, District 1, HCMC, Viet Nam  
Tel : (84- 28) 38257622 - Fax : +(84-28) 6264 0290  
Email : sales@antrade.vn; HP : +84-903 904030

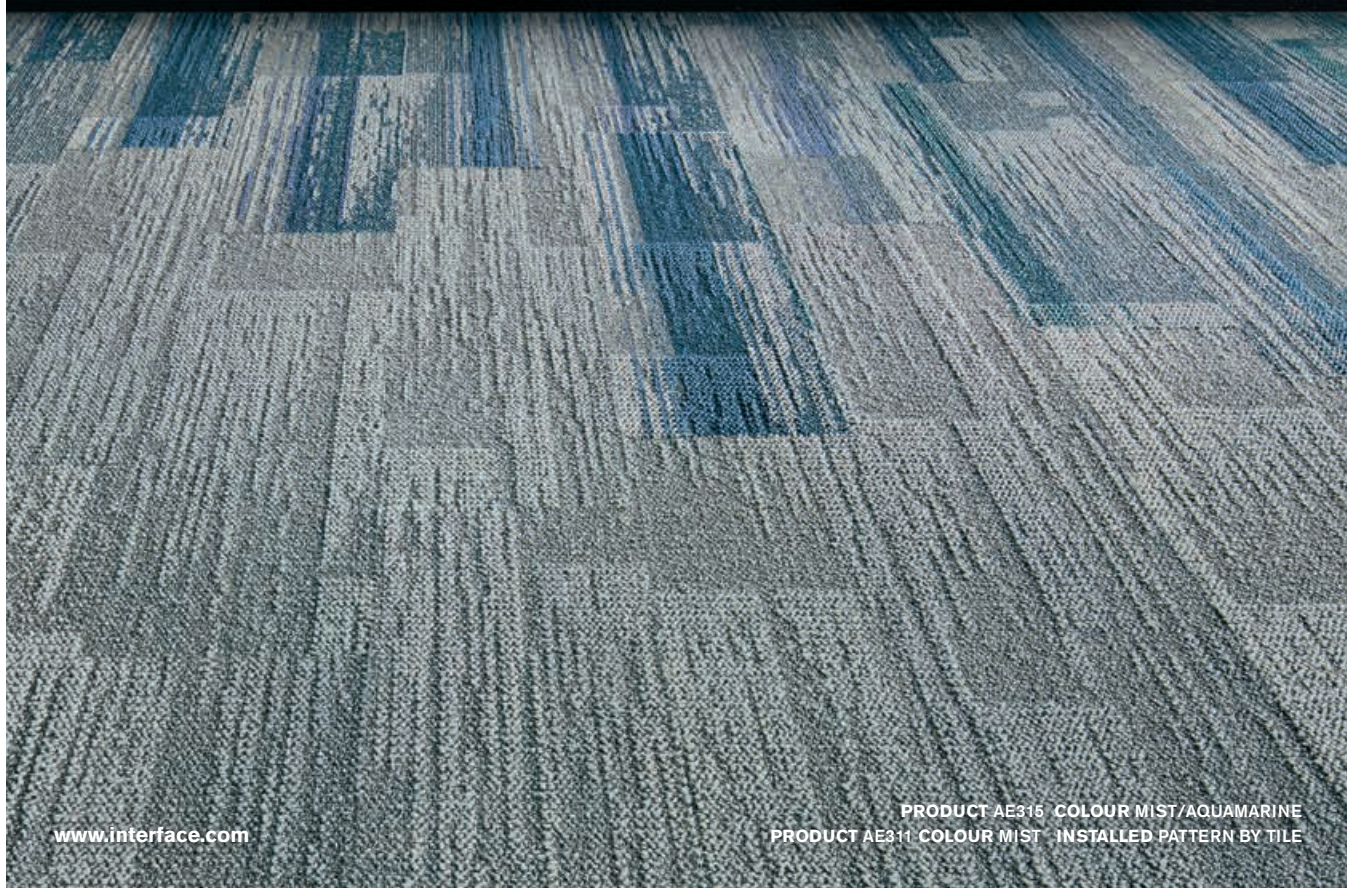
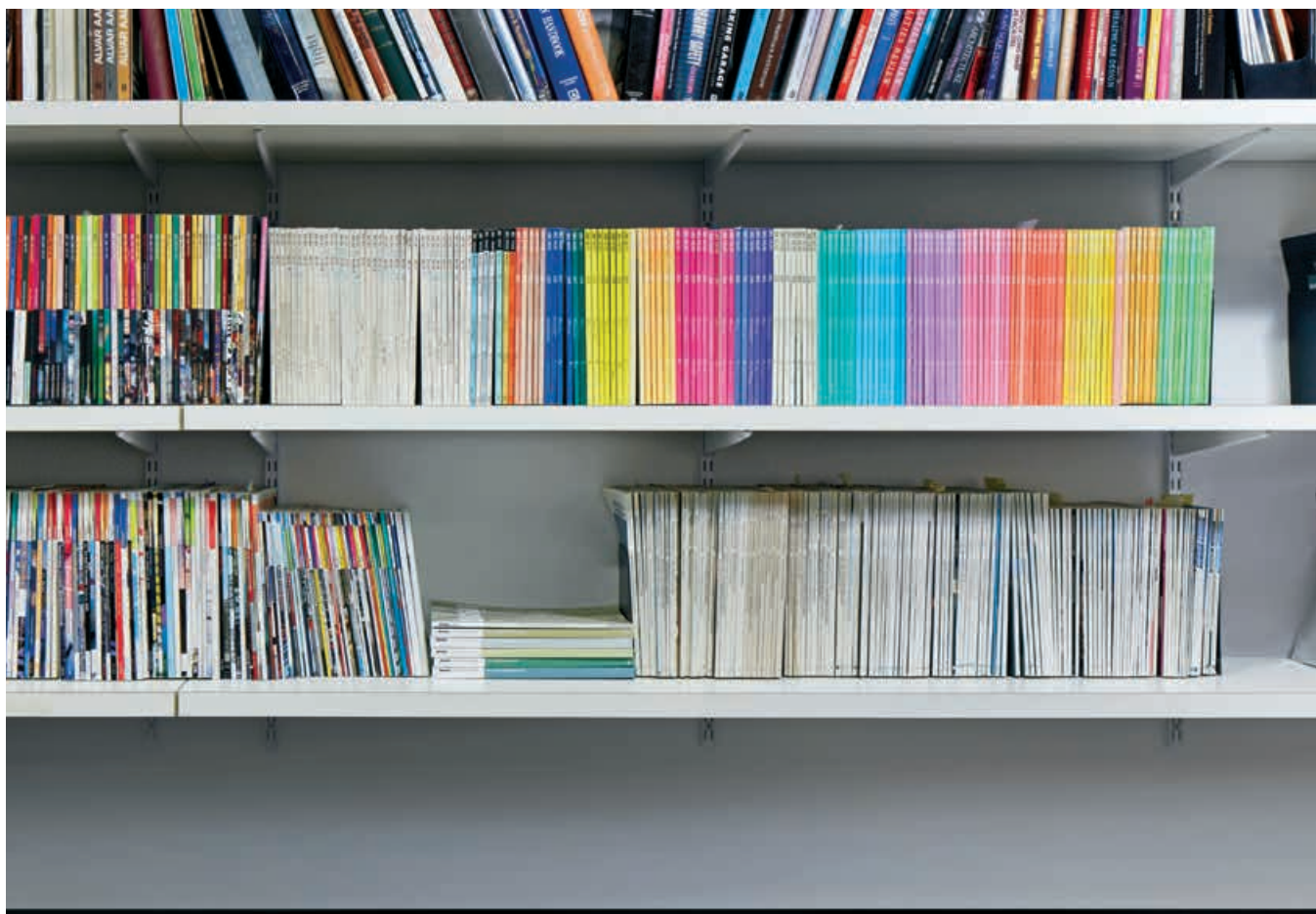












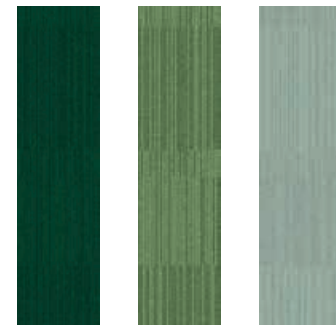
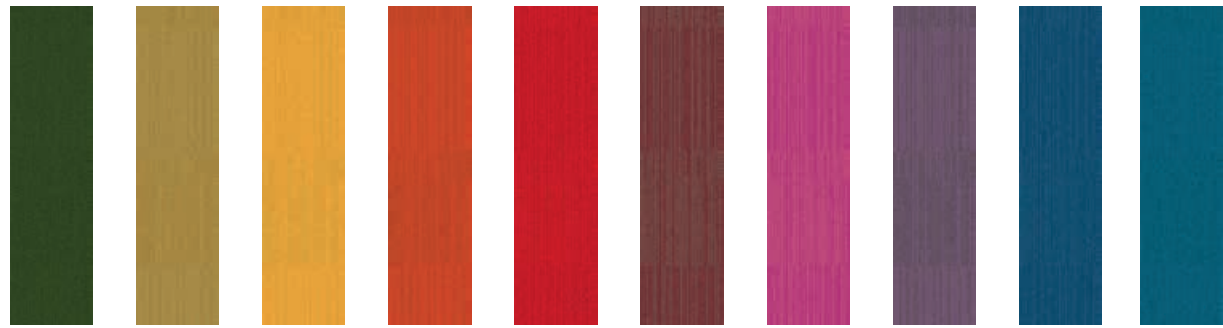
[www.interface.com](http://www.interface.com)

PRODUCT AE315 COLOUR MIST/AQUAMARINE  
PRODUCT AE311 COLOUR MIST - INSTALLED PATTERN BY TILE

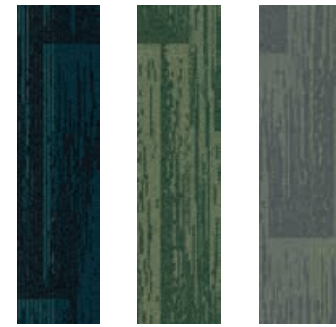


PRODUCT AE317 COLOUR EMERALD - INSTALLED ASHLAR

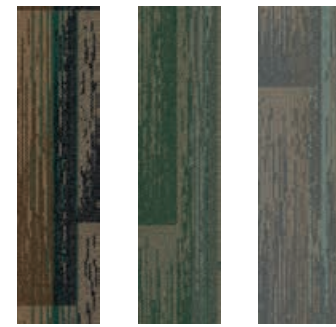
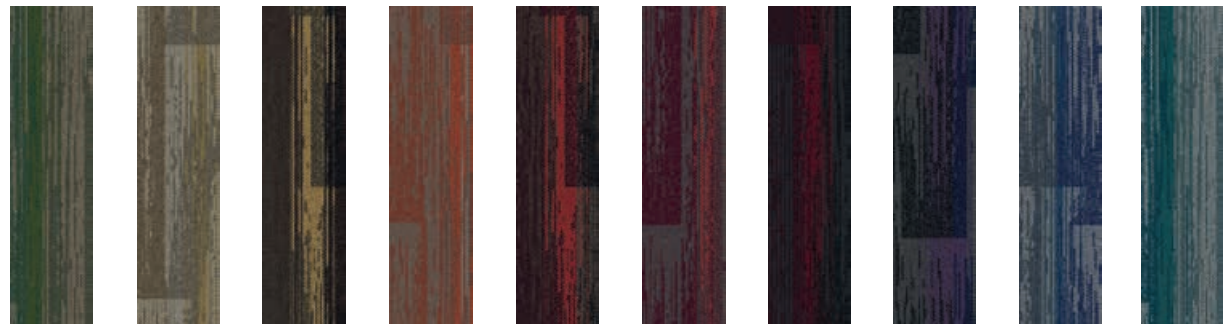




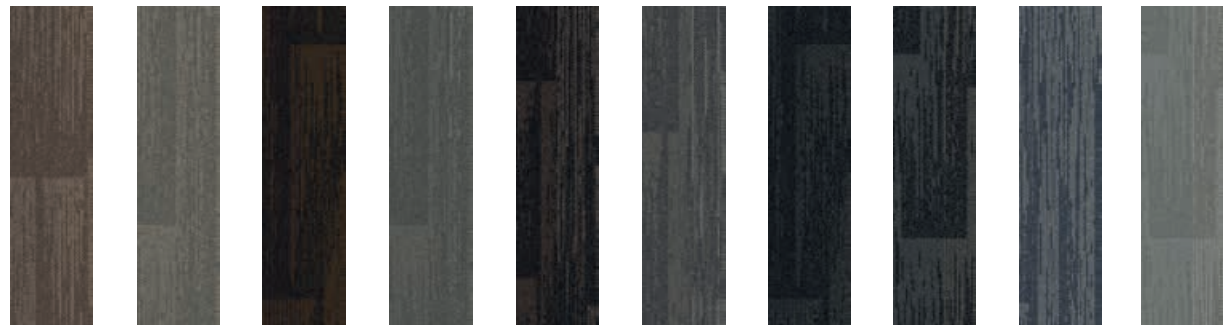
**On Line (Brights)**



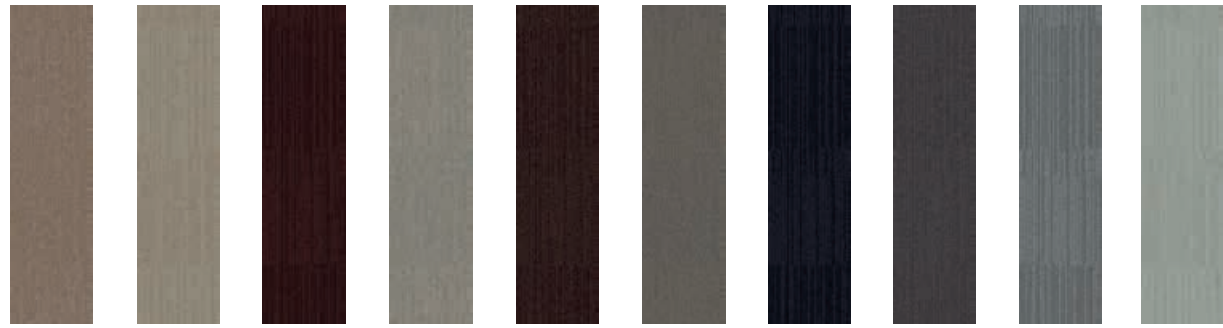
**AE317**



**AE315**



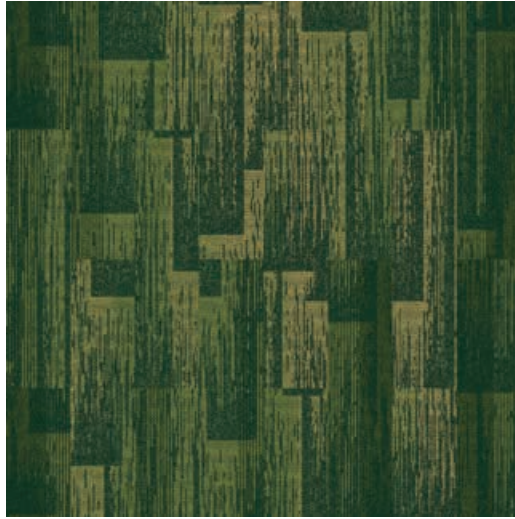
**AE311**



**On Line (Neutrals)**



# AE317



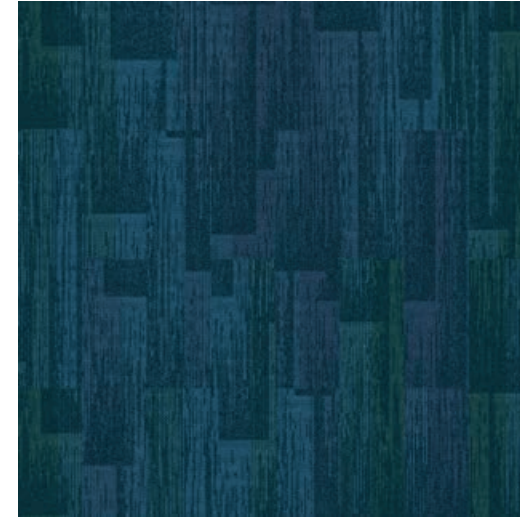
9210-001-000 GRASS



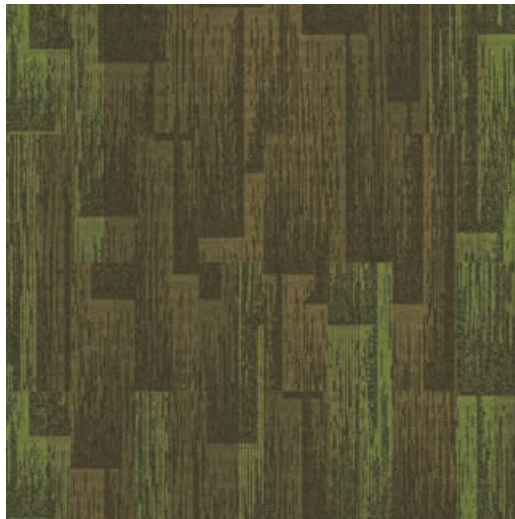
9210-004-000 PERSIMMON



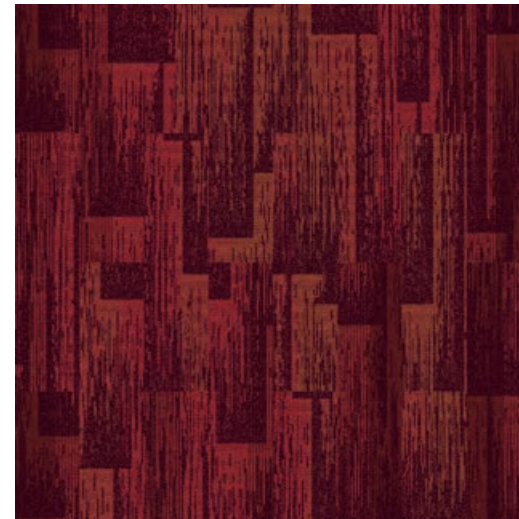
9210-007-000 MAGENTA



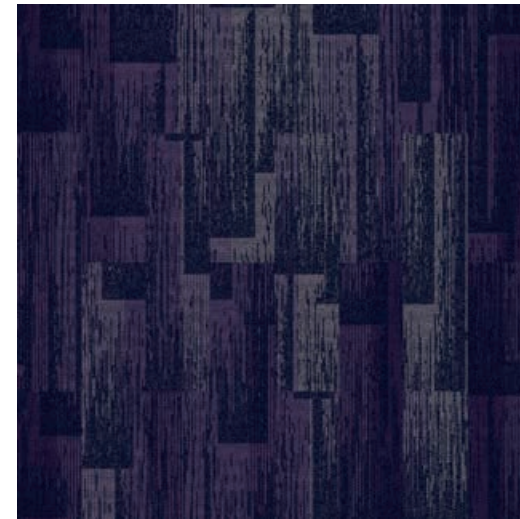
9210-010-000 AQUAMARINE



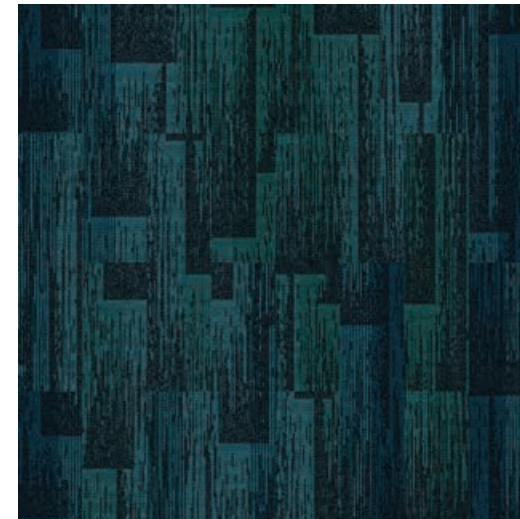
9210-002-000 CITRON



9210-005-000 POPPY



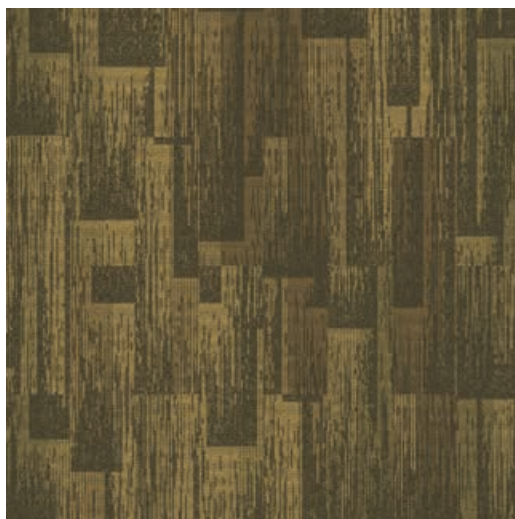
9210-008-000 IRIS



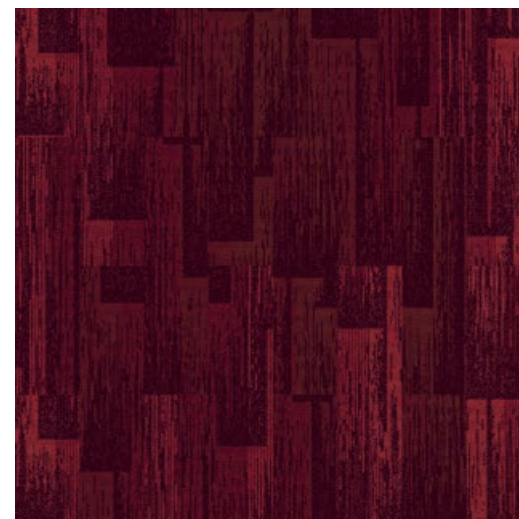
9210-011-000 EMERALD



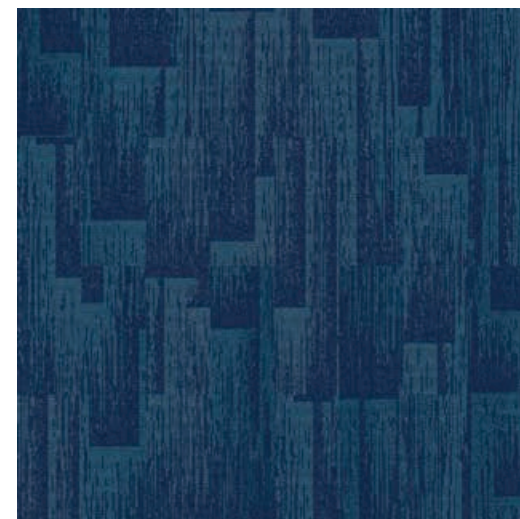
9210-013-000 EUCALYPTUS



9210-003-000 MARIGOLD



9210-006-000 BERRY



9210-009-000 AZURE

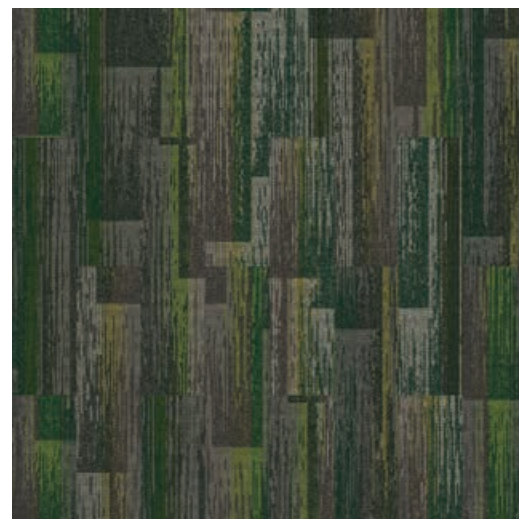


9210-012-000 LEAF

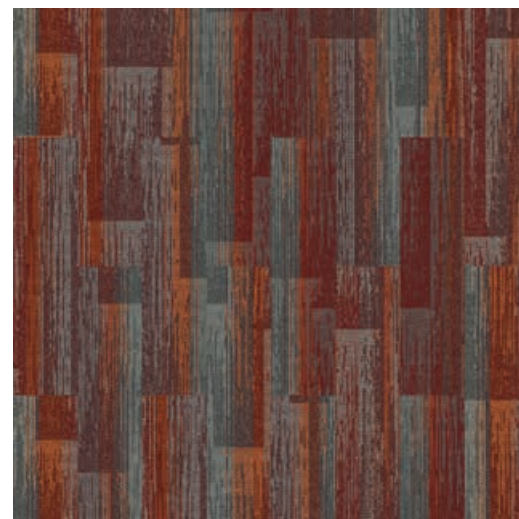




# AE315



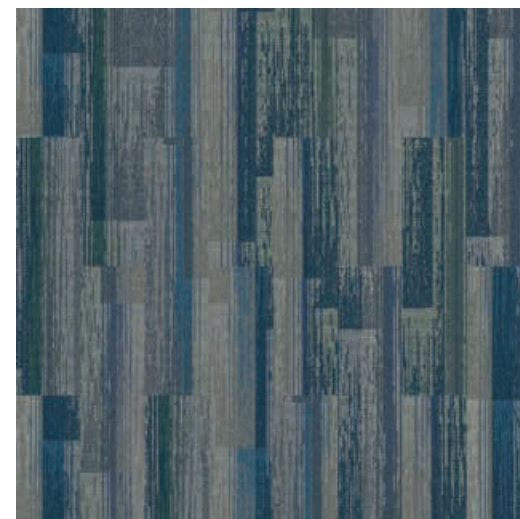
9209-001-000 MUSHROOM/GRASS



9209-004-000 GREIGE/PERSIMMON



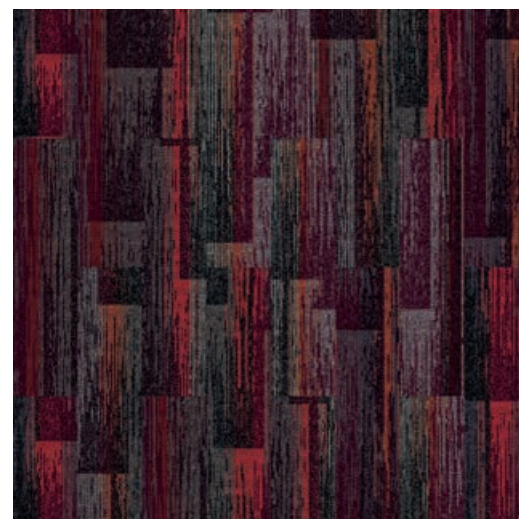
9209-007-000 INK/MAGENTA



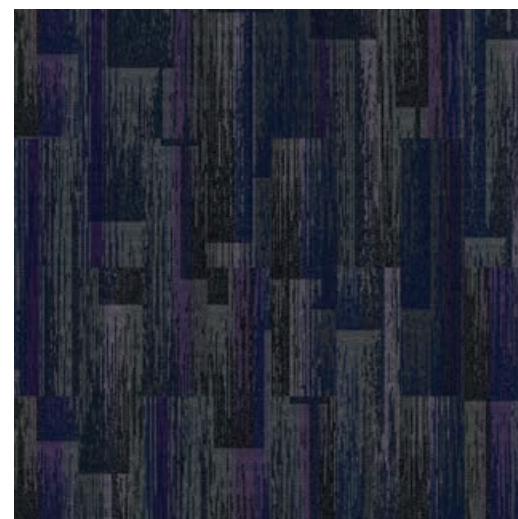
9209-010-000 MIST/AQUAMARINE



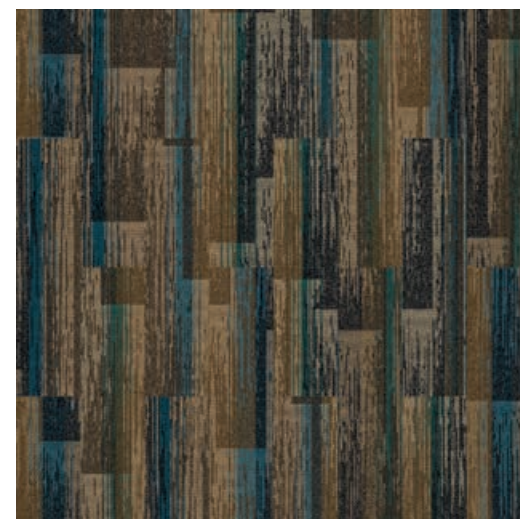
9209-002-000 FOG/CITRON



9209-005-000 LOAM/POPPY



9209-008-000 SMOKE/IRIS



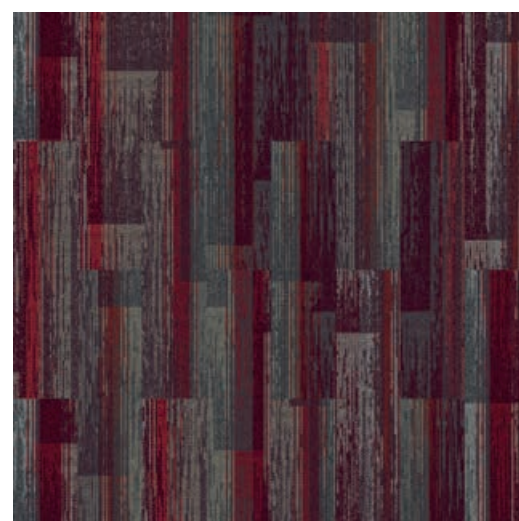
9209-011-000 TOPAZ/EMERALD



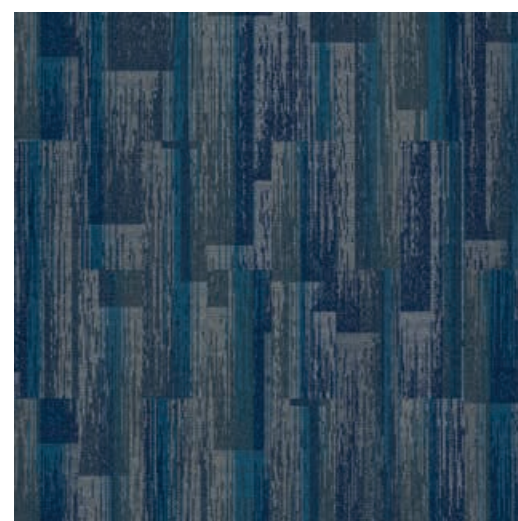
9209-013-000 BISCUIT/EUCALYPTUS



9209-003-000 CHESTNUT/MARIGOLD



9209-006-000 IRON/BERRY



9209-009-000 GRANITE/AZURE



9209-012-000 TAUPE/LEAF



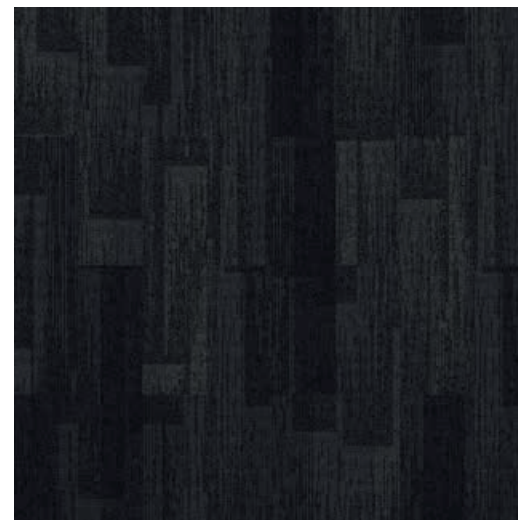
# AE311



7922-016-000 MUSHROOM



7922-005-000 GREIGE



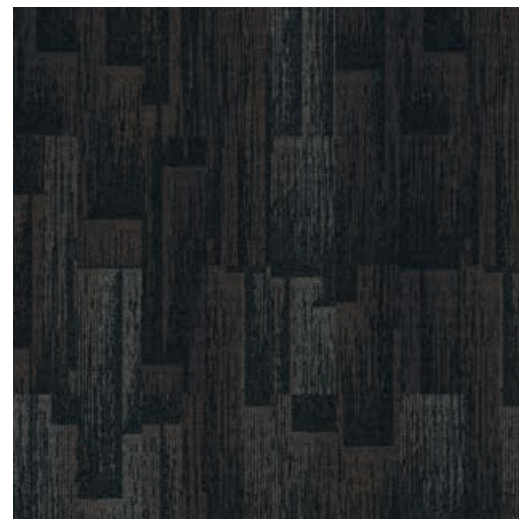
7922-008-000 INK



7922-001-000 MIST



7922-002-000 FOG



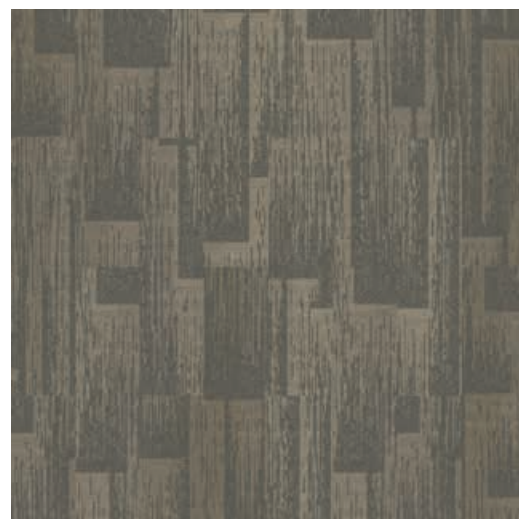
7922-017-000 LOAM



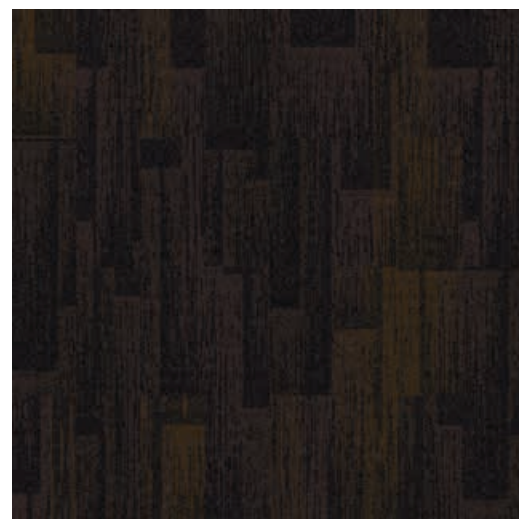
7922-007-000 SMOKE



7922-019-000 TOPAZ



7922-020-000 BISCUIT



7922-004-000 CHESTNUT



7922-006-000 IRON



7922-018-000 GRANITE



7922-003-000 TAUPE

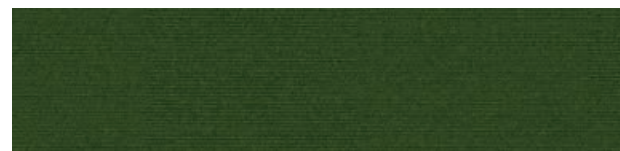


# OnLine

brights | neutrals



7335-140-000 EUCALYPTUS



7335-082-000 GRASS



7335-086-000 CITRON



7335-087-000 MARIGOLD



7335-138-000 PERSIMMON



7335-014-000 POPPY



7335-090-000 BERRY



7335-093-000 MAGENTA



7335-092-000 IRIS



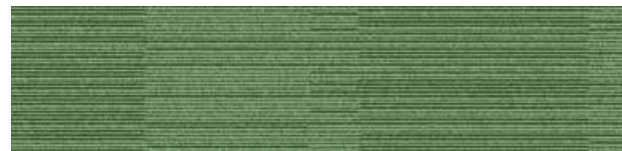
7335-023-000 AZURE



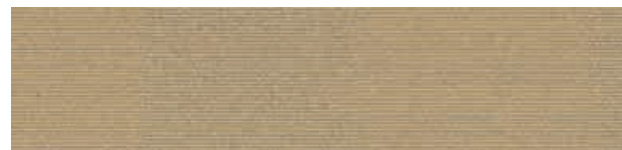
7335-084-000 AQUAMARINE



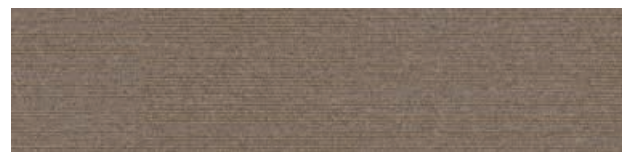
7335-083-000 EMERALD



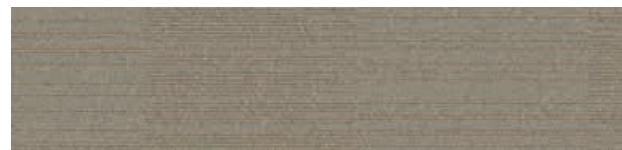
7335-139-000 LEAF



7335-004-000 BISCUIT



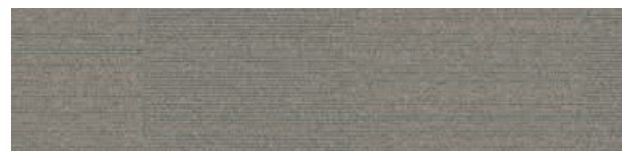
7335-002-000 MUSHROOM



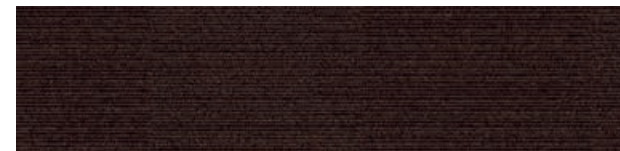
7335-080-000 PIGEON



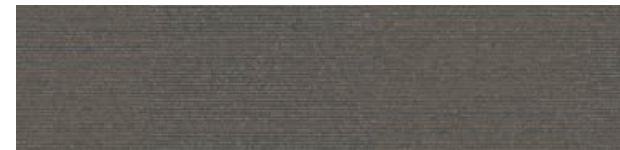
7335-018-000 COFFEE



7335-077-000 FOG



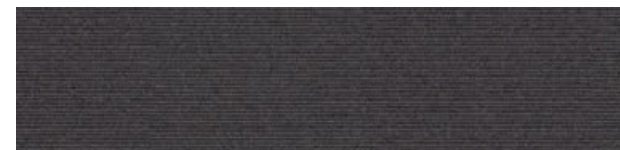
7335-017-000 LOAM



7335-081-000 TITANIUM



7335-005-000 INK



7335-006-000 PEWTER



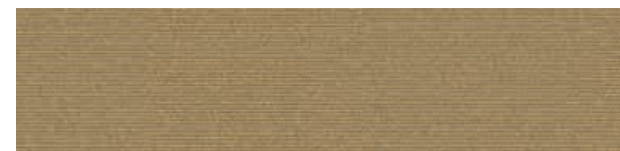
7335-078-000 GRANITE



7335-021-000 CLOUD



7335-003-000 TOPAZ



7335-070-000 LICHEN





PRODUCT AE311 COLOUR FOG PRODUCT AE315 COLOUR FOG/CITRON  
PRODUCT AE317 COLOUR CITRON INSTALLED PATTERN BY TILE



PRODUCT AE311 COLOUR GREIGE  
PRODUCT AE315 COLOUR GREIGE/PERSIMMON  
PRODUCT AE317 COLOUR PERSIMMON INSTALLED PATTERN BY TILE





PRODUCT AE311 COLOUR TOPAZ PRODUCT AE315 COLOUR TOPAZ/EMERALD  
PRODUCT AE317 COLOUR EMERALD. INSTALLED PATTERN BY TILE

[www.interface.com](http://www.interface.com)



PRODUCT AE311 COLOUR IRON PRODUCT AE317 COLOUR IRIS  
INSTALLED PATTERN BY TILE









PRODUCT AE317 COLOURS AQUAMARINE, PERSIMMON  
PRODUCT AE315 COLOURS MIST/AQUAMARINE, GREIGE/PERSIMMON  
PRODUCT AE311 COLOURS MIST, GREIGE INSTALLED PATTERN BY TILE

[www.interface.com](http://www.interface.com)



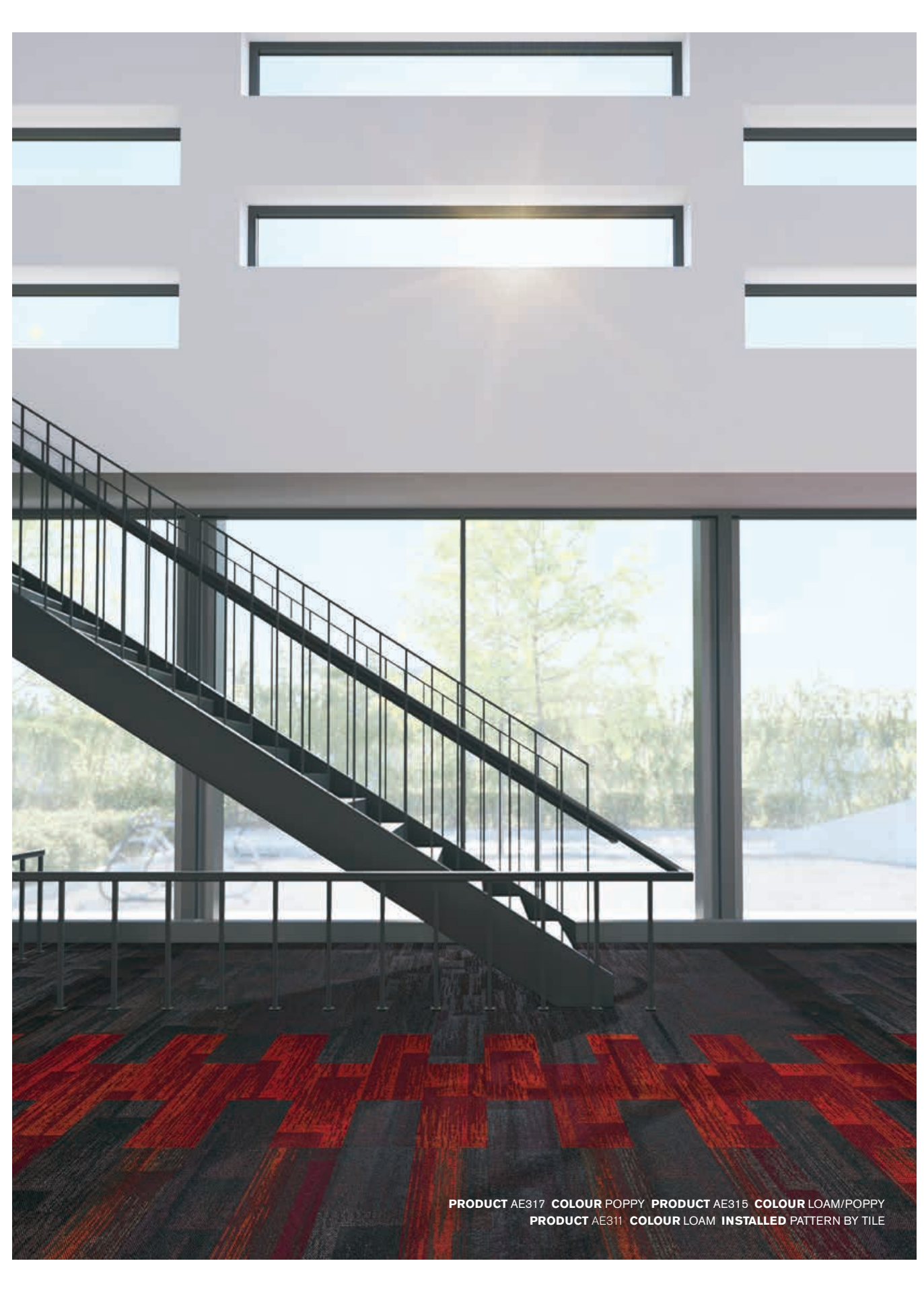
PRODUCT AE317 COLOUR PERSIMMON PRODUCT AE315 COLOUR GREIGE/PERSIMMON  
PRODUCT AE311 COLOUR GREIGE INSTALLED PATTERN BY TILE





[www.interface.com](http://www.interface.com)

PRODUCT AE311 COLOUR IRON PRODUCT AE315 COLOUR IRON/BERRY  
PRODUCT AE317 COLOUR BERRY INSTALLED PATTERN BY TILE



PRODUCT AE317 COLOUR POPPY PRODUCT AE315 COLOUR LOAM/POPPY  
PRODUCT AE311 COLOUR LOAM INSTALLED PATTERN BY TILE









PRODUCT AE317 COLOUR LEAF PRODUCT AE315 COLOUR TAUPE/LEAF  
PRODUCT AE311 COLOUR TAUPE INSTALLED PATTERN BY TILE

[www.interface.com](http://www.interface.com)



PRODUCT AE311 COLOURS LOAM, MUSHROOM, BISCUIT  
INSTALLED PATTERN BY TILE





PRODUCT AE317 COLOURS AZURE, CITRON PRODUCT AE315 COLOURS GRANITE/AZURE, FOG/CITRON  
PRODUCT AE311 COLOURS GRANITE, FOG INSTALLED PATTERN BY TILE

[www.interface.com](http://www.interface.com)



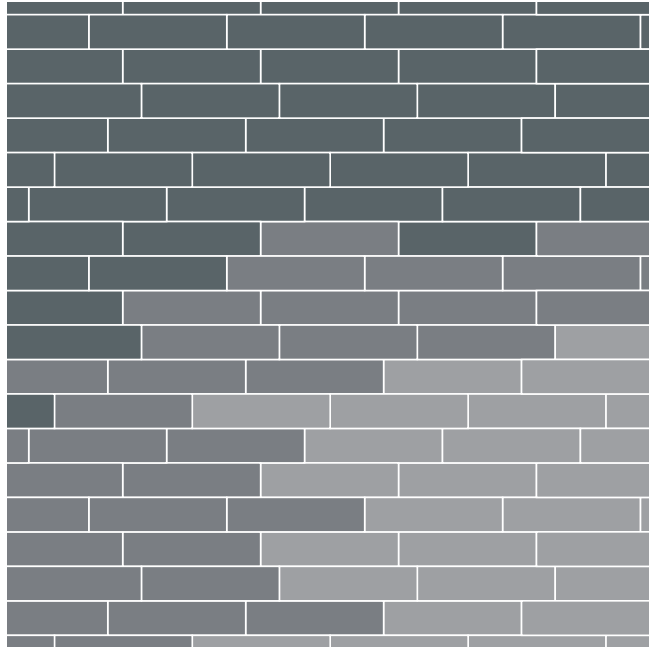
PRODUCT AE317 COLOUR LEAF  
PRODUCT AE311 COLOUR FOG INSTALLED PATTERN BY TILE



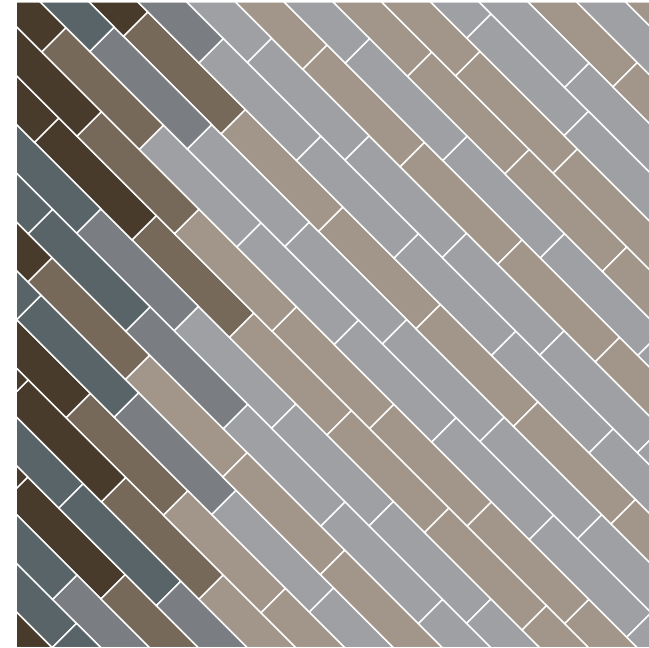




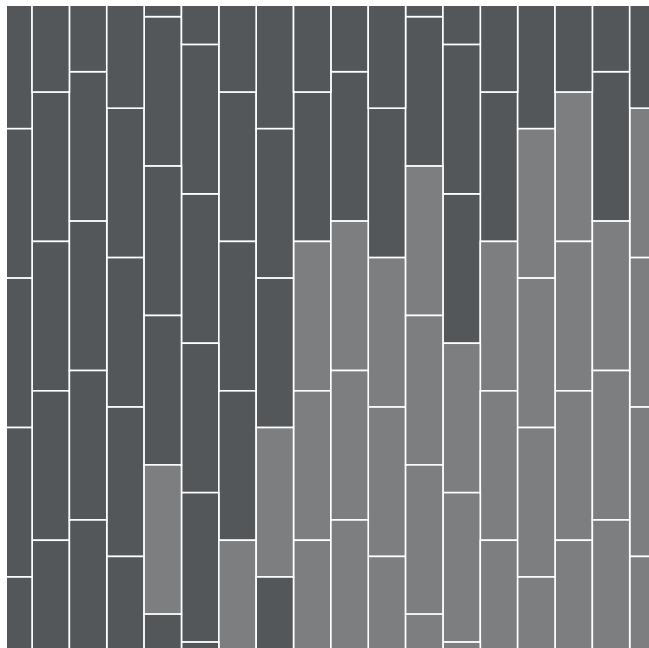
Design Ideas Below are floor layouts showing how to create the design ideas shared in several of the images featured in this brochure.



**PRODUCT AE311 COLOUR BISCUIT PRODUCT AE315 COLOUR BISCUIT/EUCALYPTUS PRODUCT AE317 COLOUR EUCALYPTUS  
INSTALLED PATTERN BY TILE**



**PRODUCT AE317 COLOURS AQUAMARINE, PERSIMMON PRODUCT AE315 COLOURS MIST/AQUAMARINE, GREIGE/PERSIMMON PRODUCT  
AE311 COLOURS MIST, GREIGE INSTALLED PATTERN BY TILE**



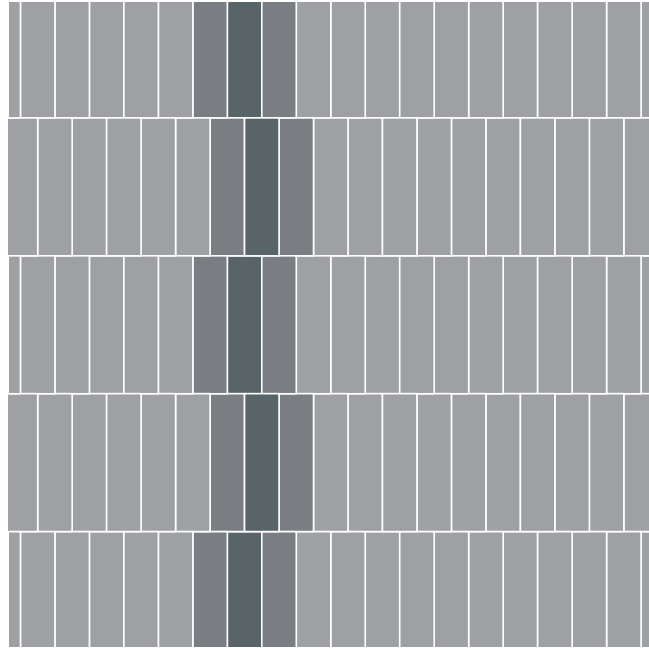
**PRODUCT AE311 COLOUR IRON PRODUCT AE317 COLOUR IRIS INSTALLED PATTERN BY TILE**



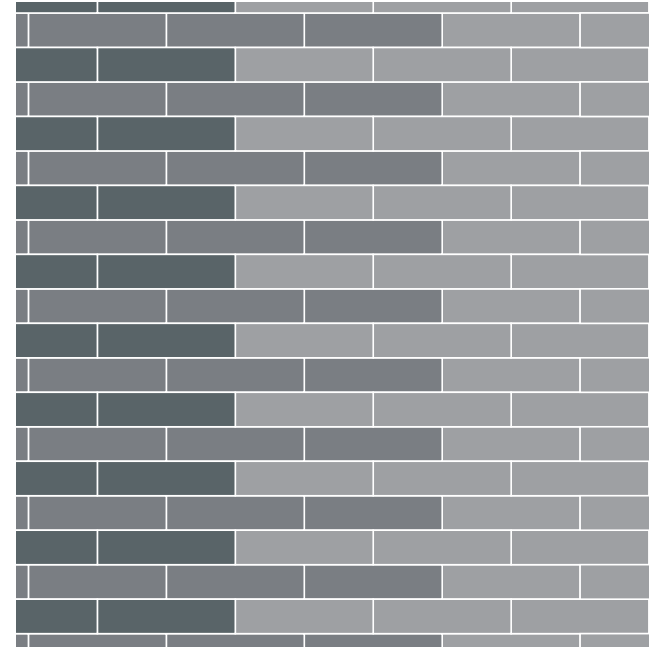
**PRODUCT AE317 COLOUR PERSIMMON PRODUCT AE315 COLOUR GREIGE/PERSIMMON PRODUCT AE311 COLOUR GREIGE INSTALLED  
PATTERN BY TILE**



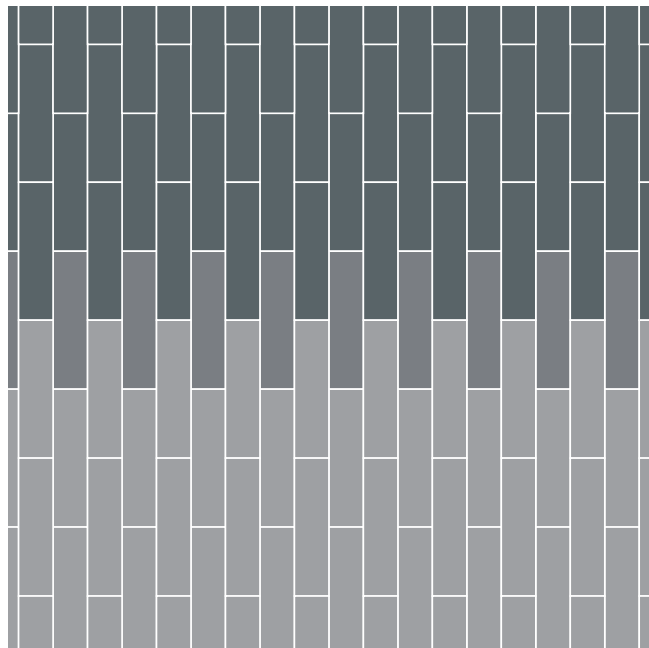
Design Ideas Below are floor layouts showing how to create the design ideas shared in several of the images featured in this brochure.



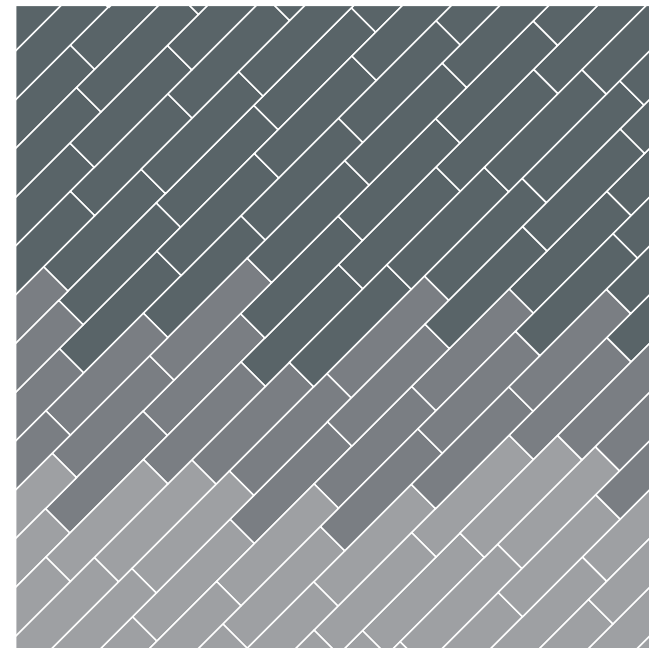
**PRODUCT AE311 COLOUR IRON PRODUCT AE315 COLOUR IRON/BERRY PRODUCT AE317 COLOUR BERRY  
INSTALLED PATTERN BY TILE**



**PRODUCT ON LINE COLOUR EUCALYPTUS PRODUCT AE317 COLOUR EUCALYPTUS PRODUCT AE311 COLOUR BISCUIT  
INSTALLED PATTERN BY TILE**



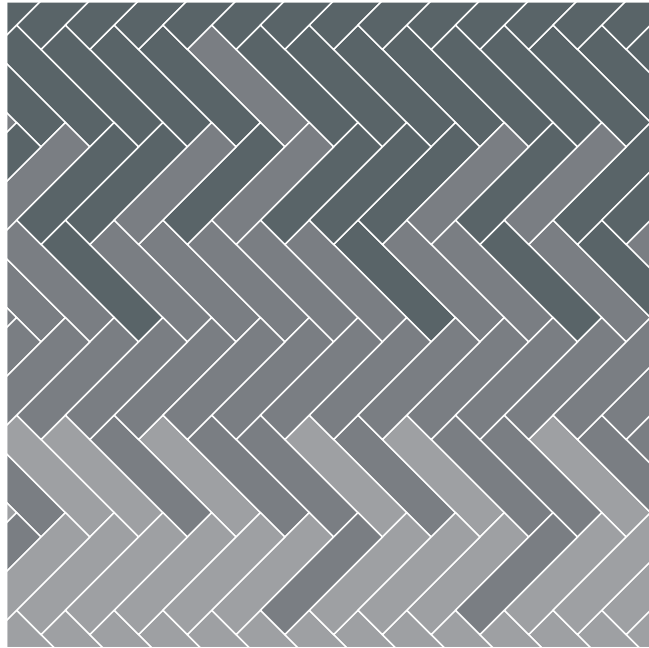
**PRODUCT AE317 COLOUR PERSIMMON PRODUCT AE315 COLOUR GREIGE/PERSIMMON PRODUCT AE311 COLOUR GREIGE  
INSTALLED PATTERN BY TILE**



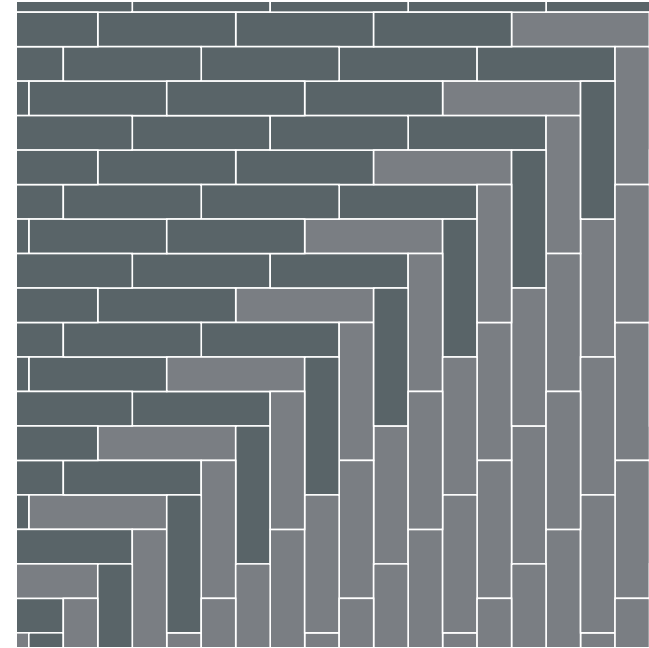
**PRODUCT AE317 COLOUR CITRON PRODUCT AE315 COLOUR FOG/CITRON PRODUCT AE311 COLOUR FOG INSTALLED PATTERN BY TILE**



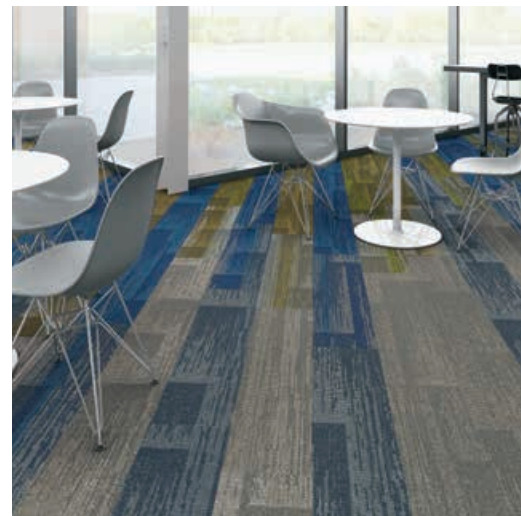
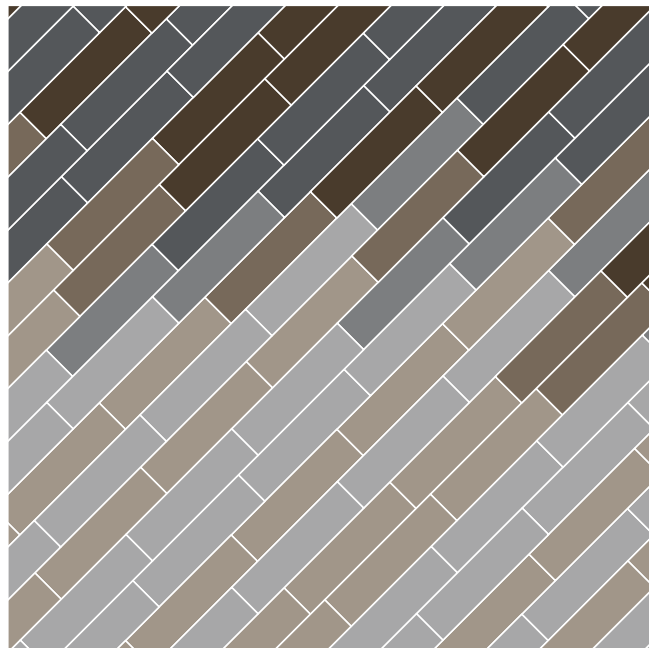
Design Ideas Below are floor layouts showing how to create the design ideas shared in several of the images featured in this brochure.



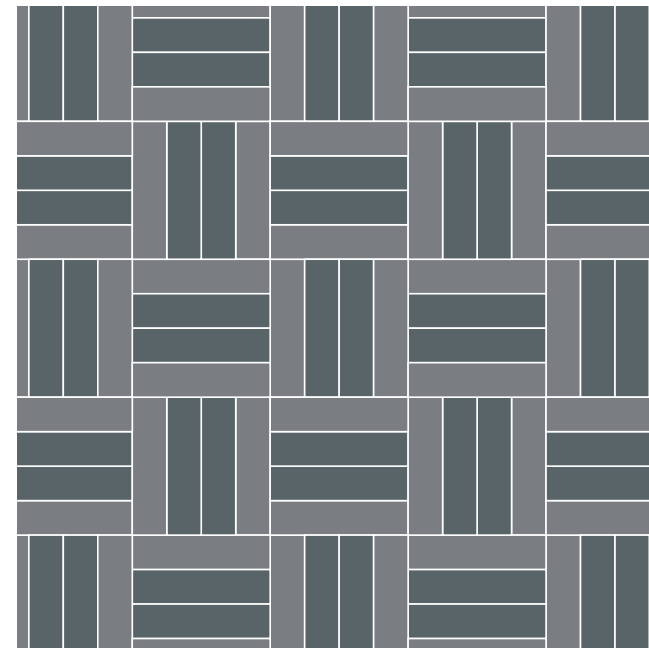
**PRODUCT AE311 COLOURS LOAM, MUSHROOM, BISCUIT INSTALLED PATTERN BY TILE**



**PRODUCT AE317 COLOUR LEAF PRODUCT AE311 COLOUR FOG INSTALLED PATTERN BY TILE**



**PRODUCT AE317 COLOURS AZURE, CITRON PRODUCT AE315 COLOURS GRANITE/AZURE, FOG/CITRON  
PRODUCT AE311 COLOURS GRANITE, FOG INSTALLED PATTERN BY TILE**

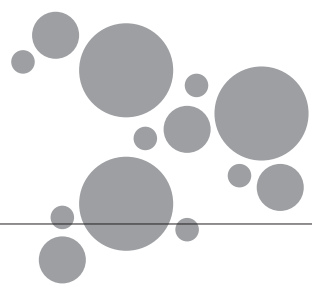
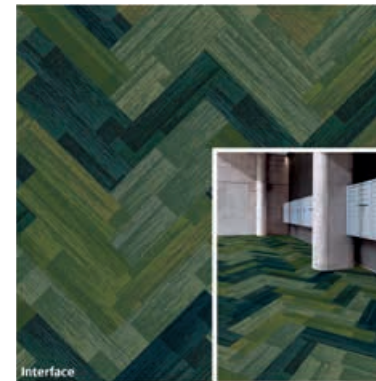
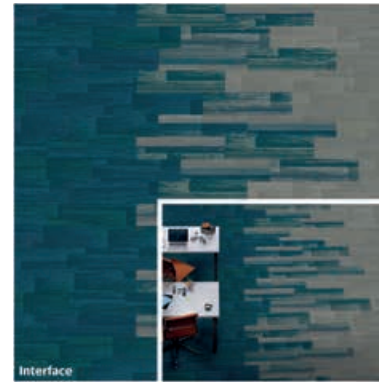
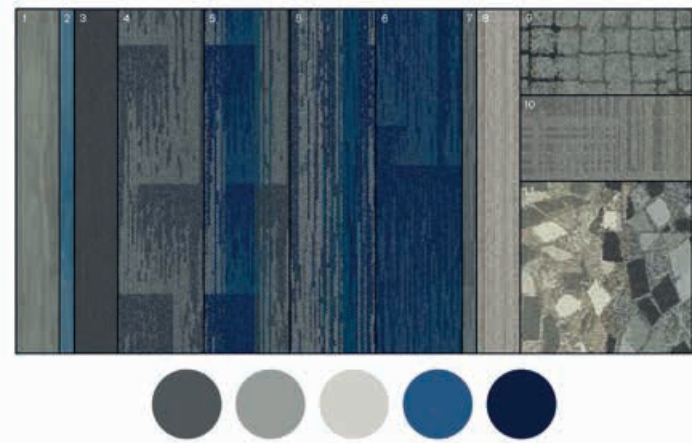


**PRODUCT AE315 COLOUR MIST/AQUAMARINE PRODUCT AE317 COLOUR AQUAMARINE INSTALLED PATTERN BY TILE**



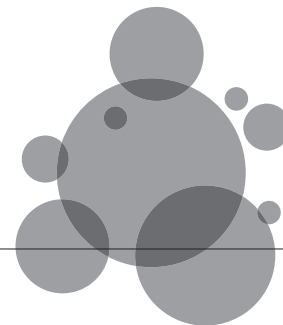
# Let us make it yours

Interface Design Services can support your project from concept to completion, to help you think through your coolest ideas at any stage of your creative process.



## Explore

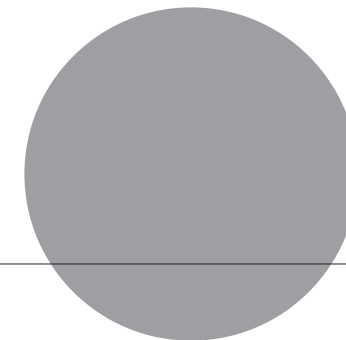
YOU'LL KNOW IT WHEN YOU SEE IT



## Refine

CONTEXT IS EVERYTHING

We'll create beautiful and distinct configurations to assist you in visualizing or communicating your ideas 3-dimensionally.



## Plan

SEE THE WHOLE PICTURE

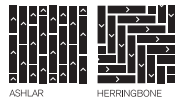
Our designers create to-scale floor plan layouts that calculate overall waste and act as an installation guide for your flooring contractor, all while expressing your vision within the context of your own drawings.



## Specifications

### AE311™

Style Code	7922 Pattern 000
Product Definition	Tufted Textured Loop
Yarn/Fibre	BCF Nylon Type 6 – 100% Recycled Content
Colour System	100% Solution Dyed
Machine Gauge	1/12
Pile Thickness	2.5mm +/- 0.5mm
Total Thickness	6.0mm +/- 0.5mm
Tile Size	25x100cm
Area of Use	Commercial – Heavy Use
Lifetime Antimicrobial	Intersept®
Soil/Stain Protection	Protekt2®
Total Recycled Content	GlasBac® 65% to 70% Total Recycled Content GlasBac®RE 80% to 85% Total Recycled Content
Installation Methods	Ashlar, Herringbone



### AE315™

Style Code	9209 Pattern 000
Product Definition	Tufted Textured Loop
Yarn/Fibre	BCF Nylon Type 6 – 100% Recycled Content
Colour System	100% Solution Dyed
Machine Gauge	1/12
Pile Thickness	2.5mm +/- 0.5mm
Total Thickness	6.0mm +/- 0.5mm
Tile Size	25x100cm
Area of Use	Commercial – Heavy Use
Lifetime Antimicrobial	Intersept®
Soil/Stain Protection	Protekt2®
Total Recycled Content	GlasBac® 65% to 70% Total Recycled Content GlasBac®RE 80% to 85% Total Recycled Content
Installation Methods	Ashlar, Herringbone



### AE317™

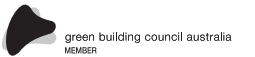
Style Code	9210 Pattern 000
Product Definition	Tufted Textured Loop
Yarn/Fibre	BCF Nylon Type 6 – 100% Recycled Content
Colour System	100% Solution Dyed
Machine Gauge	1/12
Pile Thickness	2.5mm +/- 0.5mm
Total Thickness	6.0mm +/- 0.5mm
Tile Size	25x100cm
Area of Use	Commercial – Heavy Use
Lifetime Antimicrobial	Intersept®
Soil/Stain Protection	Protekt2®
Total Recycled Content	GlasBac® 65% to 70% Total Recycled Content GlasBac®RE 80% to 85% Total Recycled Content
Installation Methods	Ashlar, Herringbone



## Specifications

### On Line™

Style Code	7335 Pattern 000
Product Definition	Tufted Textured Loop
Yarn/Fibre	BCF Nylon Type 6 – 100% Recycled content
Colour System	100% Solution Dyed
Machine Gauge	1/12
Pile Thickness	3.0mm +/- 0.5mm
Total Thickness	6.5mm +/- 0.5mm
Tile Size	25x100cm
Area of Use	Commercial – Heavy Use
Lifetime Antimicrobial	Intersept®
Soil/Stain Protection	Protekt2®
Total Recycled Content	GlasBac® 65% to 70% recycled content GlasBac®RE 80% to 85% recycled content
Installation Methods	Ashlar, Herringbone



CoolCarpet™  
Intersept®



**ANTRADE CO.,LTD**  
Room 5.03, 5th Fl., Phuong Tower, 31C Ly Tu Trong Street, Ben Nghe Ward, District 1, HCMC, Viet Nam  
Tel : (84- 28) 38257622 - Fax : +(84-28) 6264 0290  
Email : sales@antrade.vn; HP : +84-903 904030

Production specifications are subject to normal manufacturing tolerances and may be changed without notice. Slight variation in colour among different production lots are normal and should be considered in the overall installation plan. Products covered by manufacturer's written warranty only. All other warranties, including without limitation any implied warranties of merchantability or fitness for particular purpose, are hereby disclaimed. Contact your representative for written warranty information. Recycled content calculations are based on historical averages by total weight of the product for backings. Yarn/Fibre recycled content calculation excludes backing. We update our recycled content information and other environmental data regularly to reflect changes and advancements in our technology.  
\*Cool Carpet is not a standard option in Australia and New Zealand.



As part of Interface's Mission Zero promise to eliminate any negative impact on the environment by 2020, we always consider the environment impact of every creative, manufacturing and building decision. This sample book is printed on recycled paper and with soy based ink. Twenty four virgin trees were saved from our use of 1725kg of recycled paper in the production of 5000 sample books. Energy intensity also decreased and greenhouse gases were reduced. The other reductions came from waste water and solid waste. Through our sample reclamation program, we help keep sample materials out of landfill by re-using them until it is time to recycle these sample materials.

**www.interface.com**

**South East Asia**

Interface Asia  
tel: 65-6478 1510  
www.interface.com

**South Korea**

tel. 82-2-555 1734  
www.interface.com

**Japan**

Interface Japan  
tel: 81-3-5733 5211  
www.interface.com

**India**

Interface India  
tel: 91 80 30589350  
www.interface.com

**Beijing Studio**

Interface China  
tel: 86-10-6590 7810  
www.interface.com.cn

**Hongkong Studio**

Interface China  
tel: 852-2802 0838  
www.interface.com.cn

**Shanghai Studio**

Interface China  
tel: 86-21-6340 3868  
www.interface.com.cn

**Australia**

Interface Australia  
local toll free: 1800 008 101  
www.interface.com

04/2018  
SF0106T0



**ANTRADE CO.,LTD**  
Room 5.03, 5th Fl., Phuong Tower, 31C Ly Tu Trong  
Street, Ben Nghe Ward, District 1, HCMC, Viet Nam  
Tel : (84- 28) 38257622 - Fax :+(84-28) 6264 0290  
Email : sales@antrade.vn; HP : +84-903 904030



**Mission Zero:**  
our promise to eliminate any  
negative impact our company  
may have on the environment  
by the year 2020.