

Aerial Squares AE310, AE312



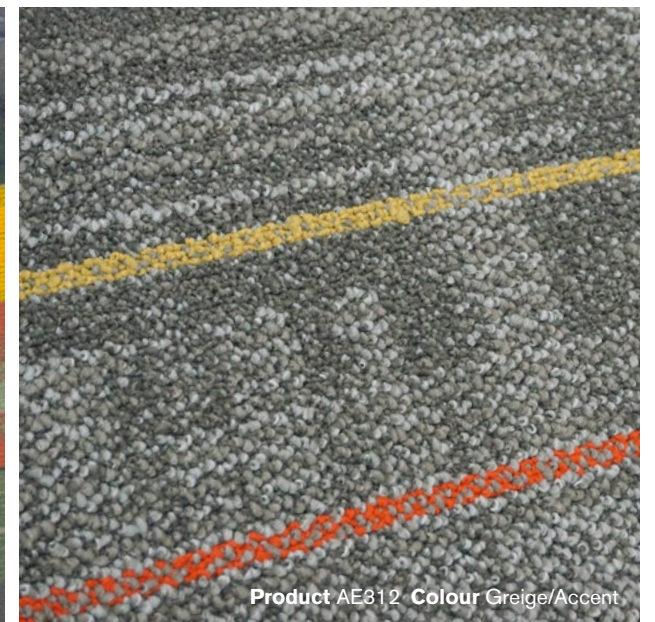
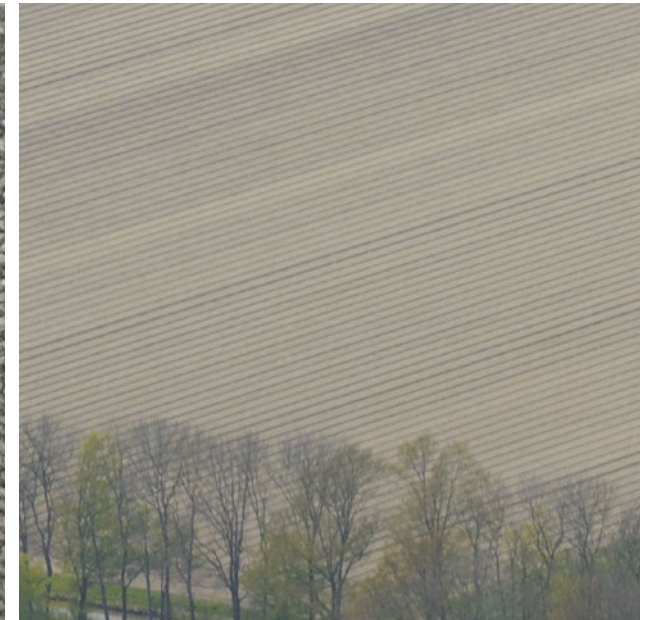
Interface®

A view from above gives us the unique opportunity to witness connectivity. The web of connections fascinates and assures us. In Aerial, a simple neutral palette travels new paths when several hues are tangled together for each colourway. The way the shades shift in seemingly endless movements from one tile to the next is provocative and stirs attention.

The construction of AE310 recalls the warp and weft of a hand-woven textile. AE312 adds strands of colour to light up that texture. The Aerial squares fit together effortlessly with the rest of the collection, creating a network of design possibilities to trace and discover.



Product AE310 Colour Greige



Product AE312 Colour Greige/Accent



Product AE312 Colour Mist/Accent Installed Brick



Product AE310 Colour Fog Installed Non Directional



Product AE310 Colours Mist, Greige, Ink Installed Non Directional
Product AE312 Colour Ink/Accent Installed Quarter Turn

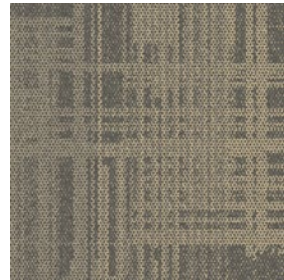
AE310 Colourline



7921-001-000 Mist



7921-002-000 Fog



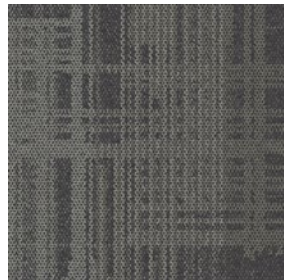
7921-003-000 Taupe



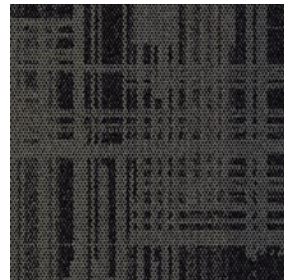
7921-004-000 Chestnut



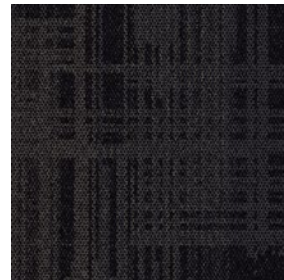
7921-005-000 Greige



7921-006-000 Iron



7921-007-000 Smoke



7921-008-000 Ink



Product AE310 Colour Smoke Installed Non Directional

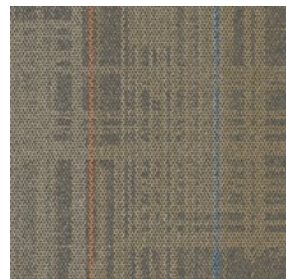
AE312 Colourline



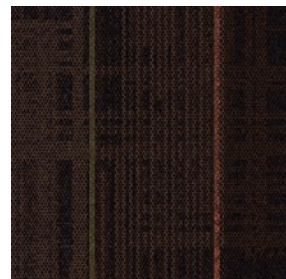
8148-001-000 Mist/Accent



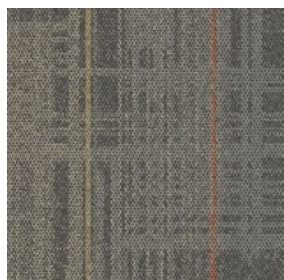
8148-002-000 Fog/Accent



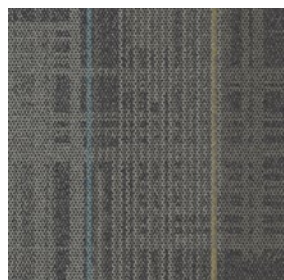
8148-003-000 Taupe/Accent



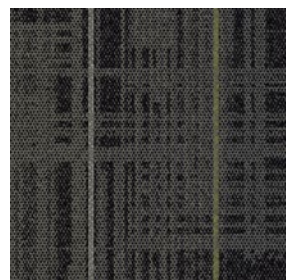
8148-004-000 Chestnut/Accent



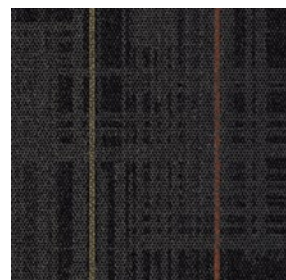
8148-005-000 Greige/Accent



8148-006-000 Iron/Accent



8148-007-000 Smoke/Accent

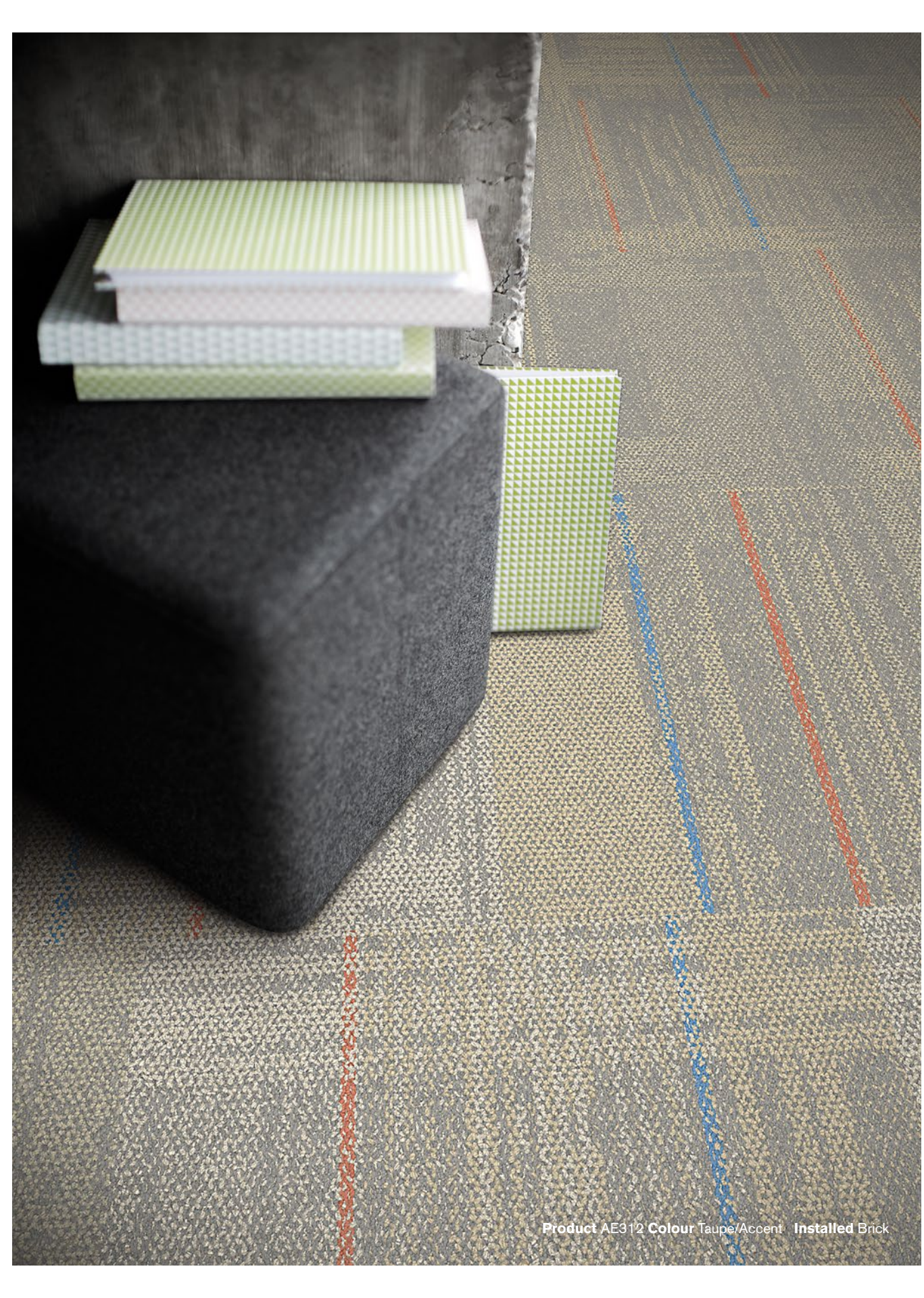


8148-008-000 Ink/Accent



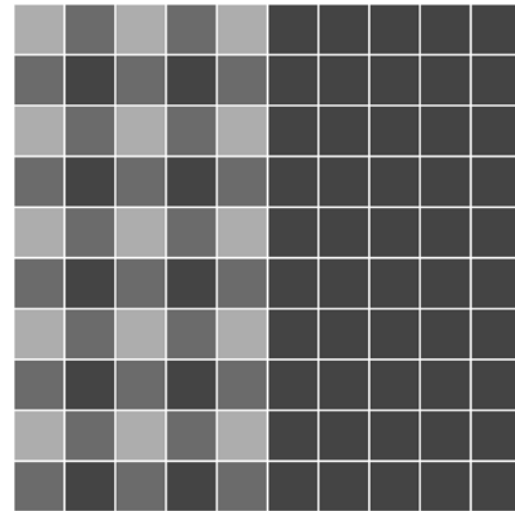


Product AE312 Colour Iron/Accent Installed Brick Product AE310 Colour Iron Installed Non Directional

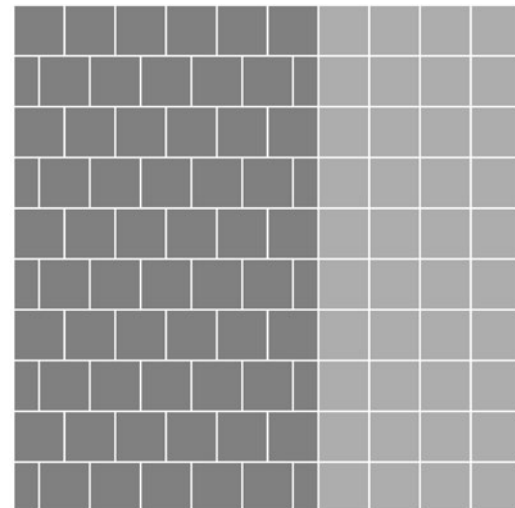


Product AE312 Colour Taupe/Accent Installed Brick

Design Ideas Below are floor layouts showing how to create the design ideas shared in some of the images featured in this brochure.



Product AE310 Colours Mist, Greige, Ink **Installed** Non Directional
Product AE312 Colour Ink/Accent **Installed** Quarter Turn



Product AE312 Colour Iron/Accent **Installed** Brick **Product AE310** Colour Iron **Installed** Non Directional

Specifications

AE310™ **i2**

Style Code	7921 Pattern 000
Product Definition	Tufted textured Loop
Yarn/Fibre	BCF Nylon Type 6 – 100% Recycled Content
Colour System	100% Solution Dyed
Machine Gauge	1/12
Pile Thickness	2.5mm +/- 0.5mm
Total Thickness	6.0mm +/- 0.5mm
Tile Size	50cm x 50cm
Area of Use	Commercial – Heavy Use
Lifetime Antimicrobial	Intersept®
Soil/Stain Protection	Protekt2®
Total Recycled Content	GlasBac® 65% to 70% Total Recycled Content Glasbac®RE 80% to 85% Total Recycled Content
Installation Methods	Non Directional



AE312™ **i2**

Style Code	8148 Pattern 000
Product Definition	Tufted textured Loop
Yarn/Fibre	BCF Nylon Type 6 – 100% Recycled Content
Colour System	100% Solution Dyed
Machine Gauge	1/12
Pile Thickness	2.5mm +/- 0.5mm
Total Thickness	6.0mm +/- 0.5mm
Tile Size	50cm x 50cm
Area of Use	Commercial – Heavy Use
Lifetime Antimicrobial	Intersept®
Soil/Stain Protection	Protekt2®
Total Recycled Content	GlasBac® 65% to 70% Total Recycled Content Glasbac®RE 80% to 85% Total Recycled Content
Installation Methods	Brick, Quarter-turn



CoolCarpet™
Intersept®

Production specifications are subject to normal manufacturing tolerances and may be changed without notice. Slight variation in colour among different production lots are normal and should be considered in the overall installation plan. Products covered by manufacturer's written warranty only. All other warranties, including without limitation any implied warranties of merchantability or fitness for particular purpose, are hereby disclaimed. Contact your representative for written warranty information. Recycled content calculations are based on historical averages by total weight of the product for backings. Yarn/Fibre recycled content calculation excludes backing. We update our recycled content information and other environmental data regularly to reflect changes and advancements in our technology.
 *Cool Carpet is not a standard option in Australia and New Zealand.

As part of Interface's Mission Zero promise to eliminate any negative impact on the environment by 2020, we always consider the environment impact of every creative, manufacturing and building decision. This sample book is printed on recycled paper and with soy based ink. Twenty four virgin trees were saved from our use of 1725kg of recycled paper in the production of 5000 sample books. Energy intensity also decreased and greenhouse gases were reduced. The other reductions came from waste water and solid waste. Through our sample reclamation program, we help keep sample materials out of landfill by re-using them until it is time to recycle these sample materials.

www.interface.com

South East Asia

Interface Asia
tel: 65-6478 1510
www.interface.com

South Korea

tel. 82-2-555 1734
www.interface.com

Japan

Interface Japan
tel: 81-3-5733 5211
www.interface.com

India

Interface India
tel: 91 80 30589350
www.interface.com

Beijing Studio

Interface China
tel: 86-10-6590 7810
www.interface.com.cn

Hongkong Studio

Interface China
tel: 852-2802 0838
www.interface.com.cn

Shanghai Studio

Interface China
tel: 86-21-6340 3868
www.interface.com.cn

Australia

Interface Australia
local toll free: 1800 008 101
www.interface.com

12/2017
SF0097T0



ANH NGOC THANH TRADING COMPANY LIMITED (ANTRADE CO., LTD.)

HCM office: R. 5.03, 5th Fl., Phuong Tower,

31C Ly Tu Trong Str., Ben Nghe W., Dist 1, HCMC. Hai Ba Trung District, Ha Noi City, Vietnam.

Tel: (+84) 28 38257622 / 28 38257623

HN office: R.701, 7th Fl., 131 Bui Thi Xuan Str.,

Tel: (+84) 24 63289487 / 24 39749263

Website: www.antrade.vn

Hotline: +84 933 662138

Email: sales@antrade.vn



Mission Zero:
our promise to eliminate any negative impact our company may have on the environment by the year 2020.